

Illustrated Parts Catalog

Aquila A210

Doc.-No. PC-AT01- 1030-100

AQUILA Aviation International GmbH • Flugplatz • D-14959 Schönhagen
www.aquila-aviation.de • kontakt@aquila-aviation.de

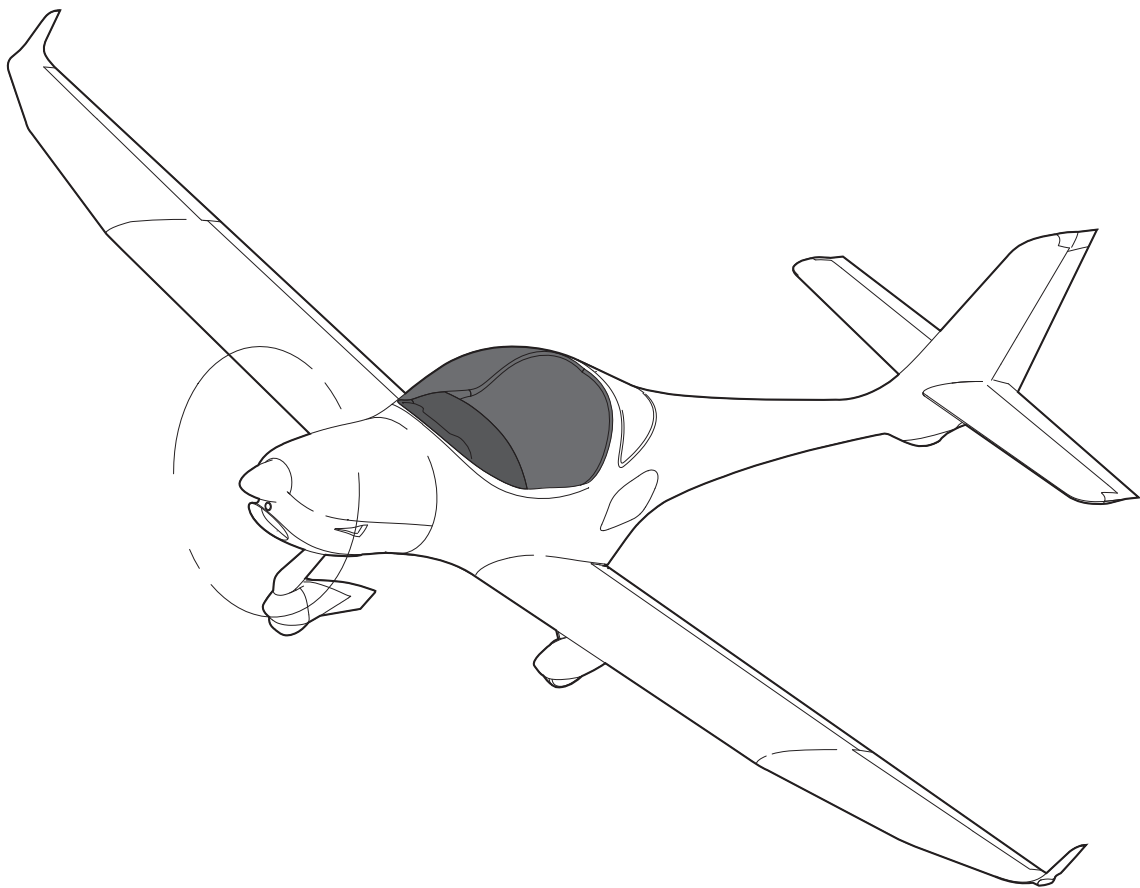
This document is copyright protected. All associated rights, in particular those of translation, reprinting, reproduction by photo mechanical or similar means and storing in data processing facilities in whole or part are reserved.

AQUILA is a registered trademark.

ILLUSTRATED PARTS CATALOG

AQUILA AT01 (A210)

Doc.-No. PC-AT01-1030-100



This document is protected by copyright. All associated rights, in particular those of translation, reprinting, reproduction by photo mechanical or similar means and storing in data processing facilities in whole or part are reserved. The technical content of this document is approved under the authority of the DOA ref. EASA.21J.025.

AQUILA Aviation International GmbH
Flugplatz
14959 Schönhagen

Phone: ++49 33 731 707 - 0
Fax: ++49 33 731 707 - 11
e-mail: kontakt@aquila-aviation.de

LIST OF EFFECTIVE CHAPTERS

| Chapter Title | Date* |
|---------------------------------|----------|
| GENERAL | |
| 00 Introduction | 15.02.13 |
| 11 Placards and Markings | 15.02.13 |
| AIRFRAME SYSTEMS | |
| 21 Ventilation and Heating | 15.02.13 |
| 24 Electrical Power | 30.06.10 |
| 25 Equipment and Furnishings | 15.02.13 |
| 27 Flight Controls | 15.02.13 |
| 28 Fuel | 29.04.16 |
| 31 Indicating/Recording Systems | 29.04.16 |
| 32 Landing Gear | 25.11.22 |
| 33 Lights | 15.02.13 |
| STRUCTURES | |
| 55 Stabilizers | 15.02.13 |
| 56 Windows | 15.02.13 |
| 57 Wings | 15.02.13 |
| POWER PLANT | |
| 71 Power Plant | 29.04.16 |
| 75 Engine Cooling | 29.04.16 |
| 76 Engine Controls | 29.04.16 |
| 77 Engine Indicating | 29.04.16 |
| 78 Exhaust | 01.06.09 |
| 79 Oil | 29.04.16 |
| MISCELLANEOUS | |
| 96 Accessory | 15.02.13 |

* The date refers to the issue / revision date of the respective chapter.

The technical content of this document (revision 07) is approved under the authority of
DOA ref. EASA.21J.025.

25.11.22 
Date, Signature Office of Airworthiness



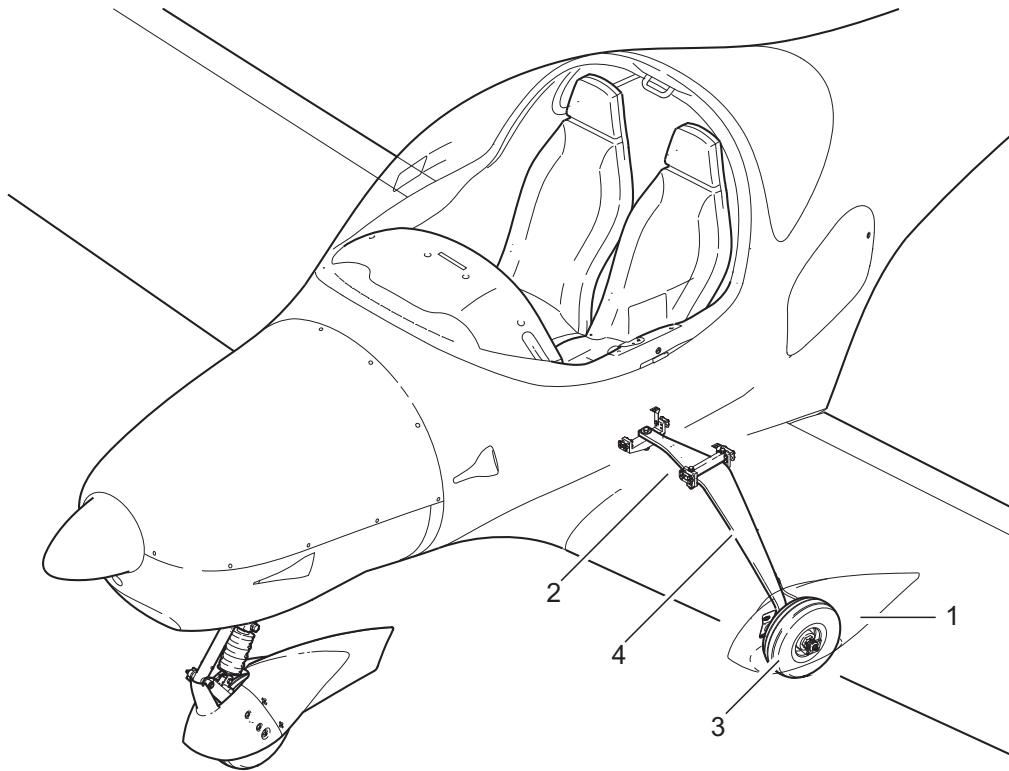
AQUILA AT01
ILLUSTRATED PARTS CATALOG

CHAPTER 32
LANDING GEAR

TABLE OF CONTENTS

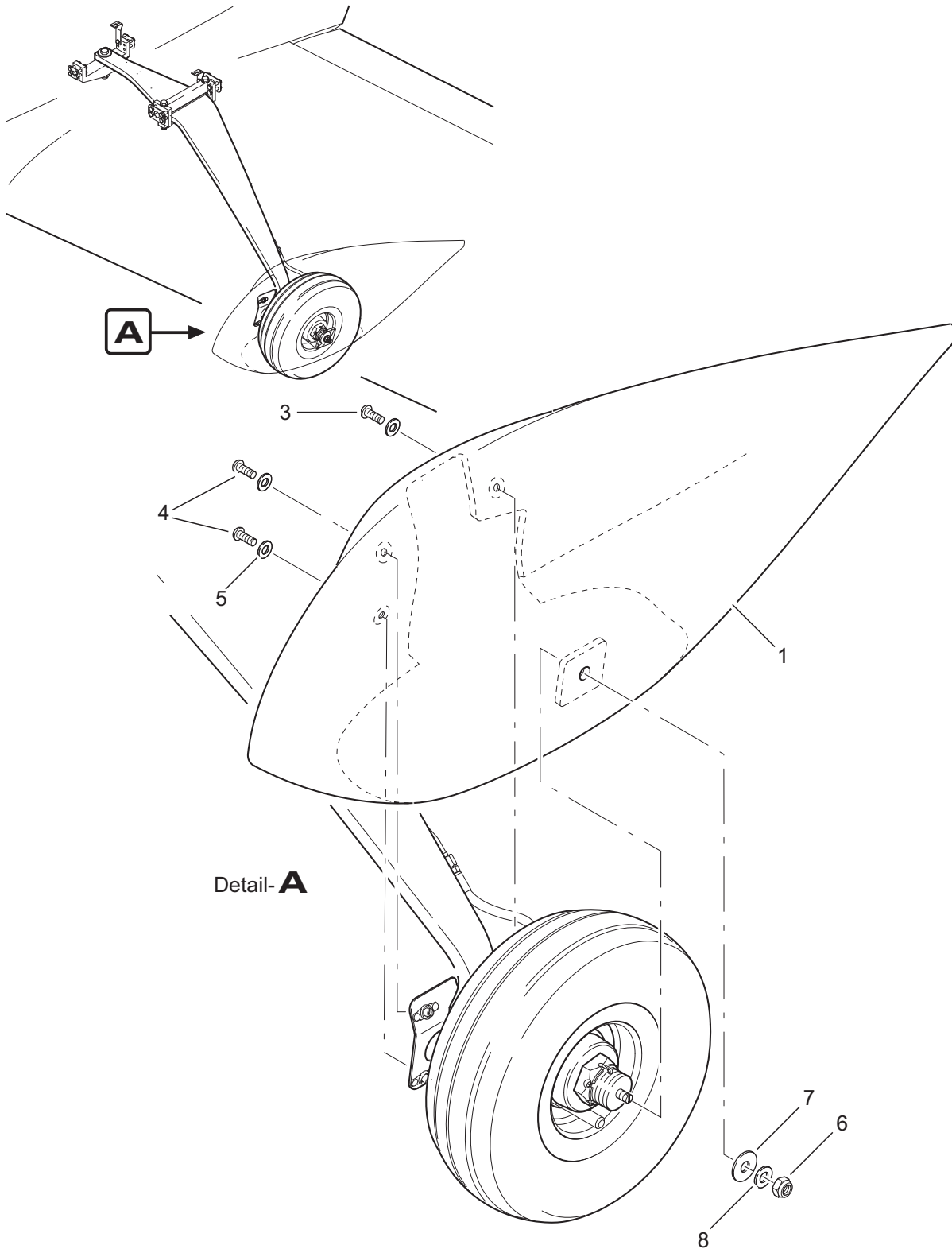
| <u>Title</u> <u>Subject</u> | <u>Chapter</u> <u>Section</u> <u>Subject</u> | <u>Page</u> | <u>Effectivity</u> |
|------------------------------------|--|-------------|--------------------|
| MAIN GEAR | 32-10-00 | 1 | |
| Main Gear - General | 32-10-00 | 2 | |
| Main Gear Fairing Installation | 32-10-00 | 4A | “High Speed” |
| Main Gear Fairing Installation | 32-10-00 | 4B | “Soft Field” |
| Main Gear Leg Installation | 32-10-00 | 6 | |
| Main Gear Wheel Installation | 32-10-00 | 8 | |
| Main Gear Leg Protection | 32-10-00 | 10 | |
| NOSE GEAR | 32-20-00 | 1 | |
| Nose Gear - General | 32-20-00 | 2 | |
| Nose Gear Fairing Installation | 32-20-00 | 4A | “High Speed” |
| Nose Gear Fairing Installation | 32-20-00 | 4B | “Soft Field” |
| Nose Gear Strut Installation | 32-20-00 | 6 | |
| Nose Gear Strut Installation | 32-20-00 | 8 | |
| Nose Gear Fork/Damper Installation | 32-20-00 | 10 | |
| Damper Assembly | 32-20-00 | 12A | |
| Damper Assembly | 32-20-00 | 12B | SB-AT01-037 |
| Nose Gear Wheel Installation | 32-20-00 | 14 | |
| WHEELS & BRAKES | 32-40-00 | 1 | |
| Wheels & Brakes - General | 32-40-00 | 2 | |
| Wheel Assembly | 32-40-00 | 4 | |
| Brake System Installation - Front | 32-40-00 | 6A | 101 - 102 |
| Brake System Installation - Front | 32-40-00 | 6B | 103 - 299 |
| Brake System Installation - Rear | 32-40-00 | 8A | 101 - 122 |
| Brake System Installation - Rear | 32-40-00 | 8B | 123 - 299 |
| Brake Caliper Installation | 32-40-00 | 10 | |

MAIN GEAR



| Fig. Item | QTY | Part Number | Nomenclature | Effectivity |
|-----------|-----|-------------|--|--------------|
| 1 | | | Main Gear - General | |
| | 1 | | Main Gear Fairing Installation (refer to 32-10-00, figure 2A for details) | "High Speed" |
| | -1 | | Main Gear Fairing Installation (refer to 32-10-00, figure 2B for details) | "Soft Field" |
| | 2 | | Main Gear Leg Installation (refer to 32-10-00, figure 3 for details) | |
| | 3 | | Main Gear Wheel Installation (refer to 32-10-00, figure 4 for details) | |
| | 4 | | Main Gear Leg Protection (refer to 32-10-00, figure 5 for details) | |

- Item not illustrated



Detail-**A**

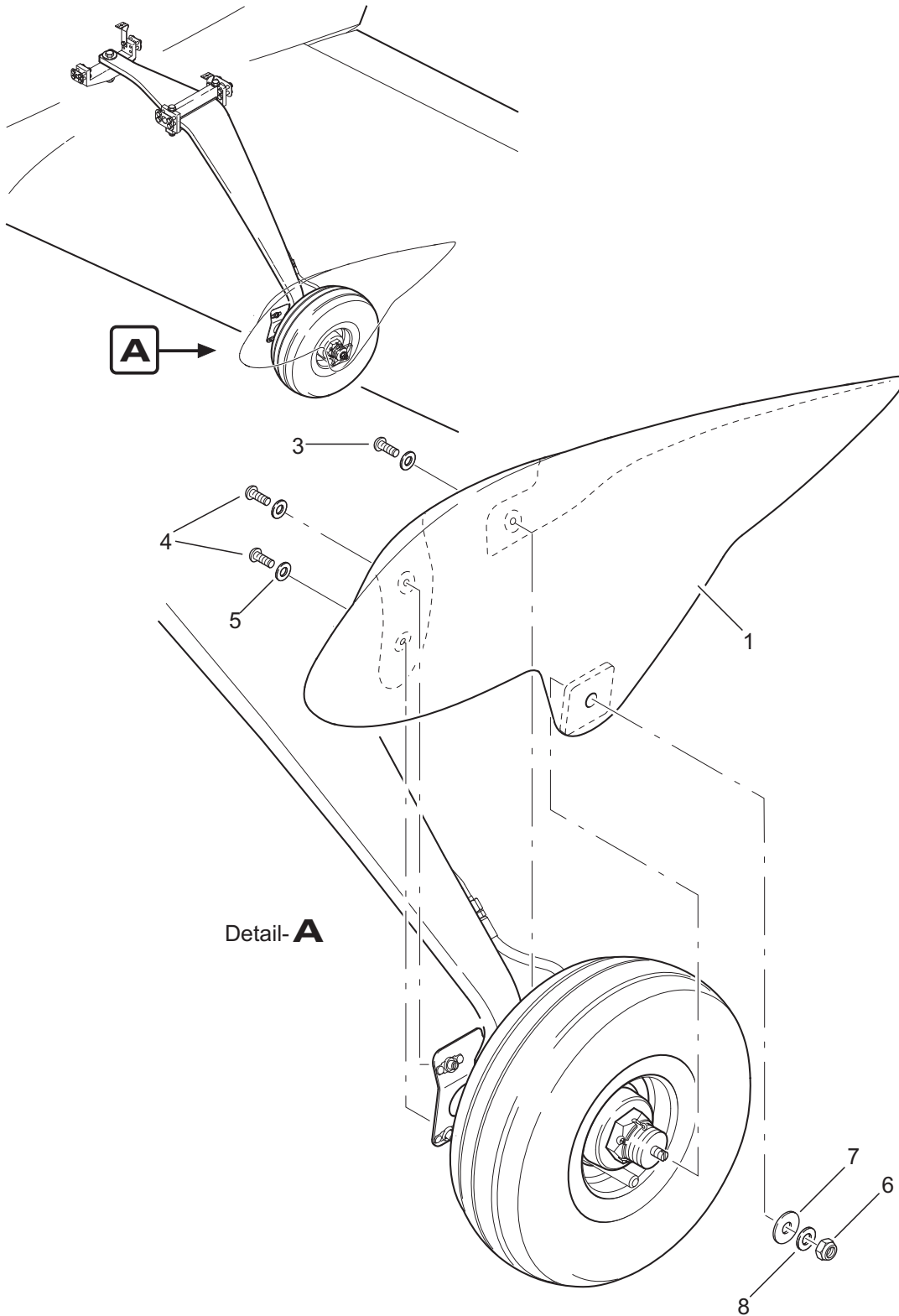
EFFECTIVITY

Aircraft equipped
with main gear
fairings "High Speed"

Main Gear Fairing Installation
Figure 2A

| Fig. Item | QTY | Part Number | Nomenclature | Effectivity |
|--|-----|-------------------|--|---------------|
| 2A | | | Main Gear Fairing Installation | "High Speed" |
| 1 | 1 | AT01-5030-001-070 | main gear fairing "High Speed" LH | |
| -2 | 1 | AT01-5030-002-070 | main gear fairing "High Speed" RH | |
| <u>Option A: Wheel fairing installation with steel washers</u> | | | | steel washers |
| 3 | 1 | 1800933_M6x20 | bolt (ISO 4017 M6x20 8.8) | |
| 4 | 2 | 1800933_M6x16 | bolt (ISO 4017 M6x16 8.8) | |
| 5 | 3 | 1809021_6,4 | washer (ISO 7093 6,4x18) | |
| 6 | 1 | 1800985_M8 | locknut (ISO 10511 M8) | |
| 7 | 1 | 1809021_8,4 | washer (ISO 7093 8,4x24) | |
| 8 | - | - | - | |
| <u>Option B: Wheel fairing installation with polyamide washers</u> | | | | PA washers |
| 3 | 1 | 1807380_6x20 ULF | bolt (ISO 7380 M6x20 ULF) | |
| 4 | 2 | 1807380_6x16 ULF | bolt (ISO 7380 M6x16 ULF) | |
| 5 | 3 | 1809021_6,4_PA | washer (ISO 7093 6,4x18 polyamide) | |
| 6 | 1 | 1800985_M8 | locknut (ISO 10511 M8) | |
| 7 | 1 | 1809021_8,4_PA | washer (ISO 7093 8,4x24 polyamide) | |
| 8 | 1 | 1800125_8,4 | washer (ISO 7089 8,4x16) | |
| <u>Service Kits & Tools</u> | | | | |
| | | AT01-5030-001-096 | main gear fairing "High Speed" LH (incl. mounting material) | |
| | | AT01-5030-002-096 | main gear fairing "High Speed" RH (incl. mounting material) | |

- Item not illustrated



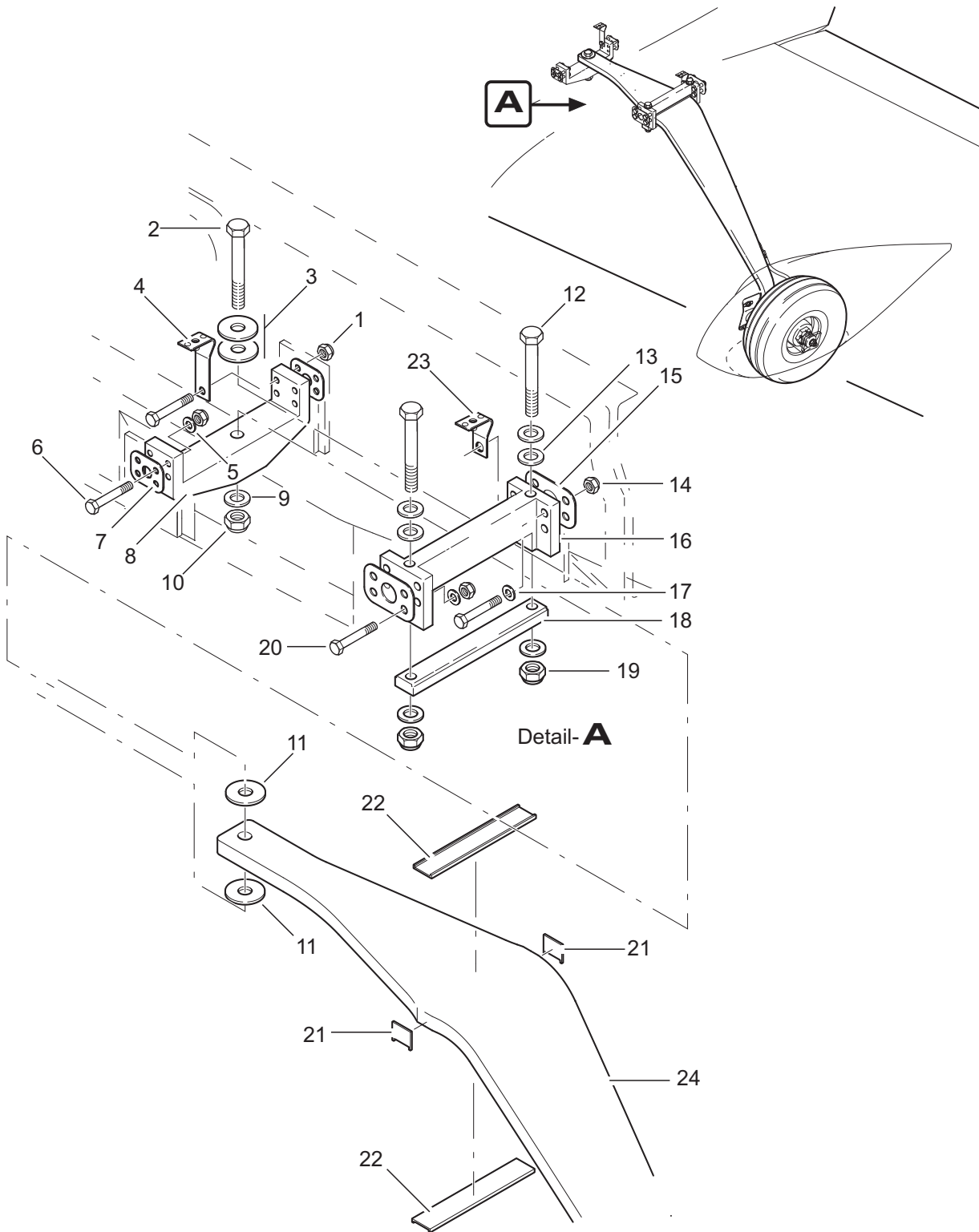
EFFECTIVITY

Aircraft equipped
with main gear
fairings "Soft Field"

Main Gear Fairing Installation
Figure 2B

| Fig. Item | QTY | Part Number | Nomenclature | Effectivity |
|--|-----|-------------------|--|---------------|
| 2B | | | Main Gear Fairing Installation | "Soft Field" |
| 1 | 1 | AT01-5030-007-070 | main gear fairing "Soft Field" LH | |
| -2 | 1 | AT01-5030-008-070 | main gear fairing "Soft Field" RH | |
| <u>Option A: Wheel fairing installation with steel washers</u> | | | | steel washers |
| 3 | 1 | 1800933_M6x20 | bolt (ISO 4017 M6x20 8.8) | |
| 4 | 2 | 1800933_M6x16 | bolt (ISO 4017 M6x16 8.8) | |
| 5 | 3 | 1809021_6,4 | washer (ISO 7093 6,4x18) | |
| 6 | 1 | 1800985_M8 | locknut (ISO 10511 M8) | |
| 7 | 1 | 1809021_8,4 | washer (ISO 7093 8,4x24) | |
| 8 | - | - | - | |
| <u>Option B: Wheel fairing installation with polyamide washers</u> | | | | PA washers |
| 3 | 1 | 1807380_6x20 ULF | bolt (ISO 7380 M6x20 ULF) | |
| 4 | 2 | 1807380_6x16 ULF | bolt (ISO 7380 M6x16 ULF) | |
| 5 | 3 | 1809021_6,4_PA | washer (ISO 7093 6,4x18 polyamide) | |
| 6 | 1 | 1800985_M8 | locknut (ISO 10511 M8) | |
| 7 | 1 | 1809021_8,4_PA | washer (ISO 7093 8,4x24 polyamide) | |
| 8 | 1 | 1800125_8,4 | washer (ISO 7089 8,4x16) | |
| <u>Service Kits & Tools</u> | | | | |
| | | AT01-5030-007-096 | main gear fairing "Soft Field" LH (incl. mounting material) | |
| | | AT01-5030-008-096 | main gear fairing "Soft Field" RH (incl. mounting material) | |

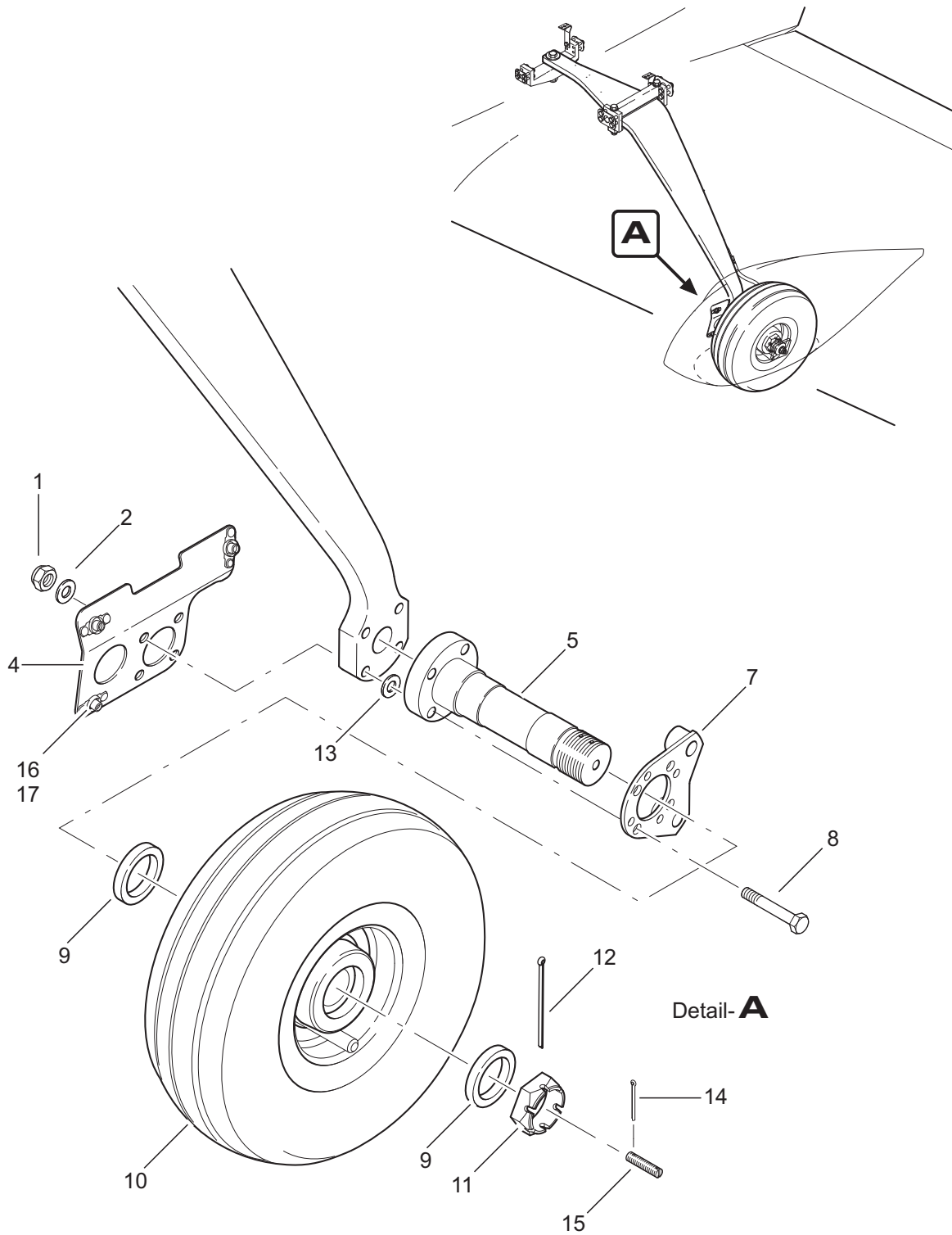
- Item not illustrated



Main Gear Leg Installation
Figure 3

| Fig. Item | QTY | Part Number | Nomenclature | Effectivity |
|-----------|-----|------------------|--|-------------|
| 3 | | | Main Gear Leg Installation | |
| 1 | 8 | 1800985_M6 | nut (ISO 10511 M6) | |
| 2 | 1 | 1800931_M12x85 | bolt (ISO 4014 M12x85 8.8) | |
| 3 | 4 | 1800440_13,5 | washer (ISO 7094 13,5x44) | |
| 4 | 1 | AT01-2160-015 | central suspension for landing gear duct cover | |
| 5 | 7 | 1800125_6,4 | washer (ISO 7089 6,4x12) | |
| 6 | 8 | 1800931_M6x45 | bolt (ISO 4014 M6x45 8.8) | |
| 7 | 2 | AT01-5050-102 | bearing plate (inner yoke) | |
| 8 | 1 | AT01-5050-100 | inner yoke | |
| 9 | 1 | 1800125_13HV2 | washer (ISO 7089 13x24) | |
| 10 | 1 | 1800985_M12 | locknut (ISO 10511 M12) | |
| 11 | 2 | 1809021_13 Nylon | polyamide washer (ISO 7093 13x37) | |
| 12 | 2 | 1800931_M10x90 | bolt (ISO 4014 M10x90 8.8) | |
| 13 | 6 | 1800125_10,5 | washer (ISO 7089 10,5x20) | |
| 14 | 8 | 1800985_M8 | locknut (ISO 10511 M8) | |
| 15 | 2 | AT01-5050-110 | bearing plate (outer yoke) | |
| 16 | 1 | AT01-5050-101 | outer yoke | |
| 17 | 7 | 1800125_8,4 | washer (ISO 7089 8,4x16) | |
| 18 | 1 | AT01-5050-103 | support bracket (outer yoke) | |
| 19 | 2 | 1800985_M10 | locknut (ISO 10511 M10) | |
| 20 | 8 | 1800931_M8x50 | bolt (ISO 4014 M8x50 8.8) | |
| 21 | 2 | AT01-5050-105 | UHMW element 2 | |
| 22 | 2 | AT01-5050-104 | UHMW element 1 | |
| 23 | 1 | AT01-2160-016 | outer suspension for landing gear duct cover | |
| 24 | 1 | AT01-5010-202 | main gear leg LH | |
| - 25 | 1 | AT01-5010-201 | main gear leg RH | |

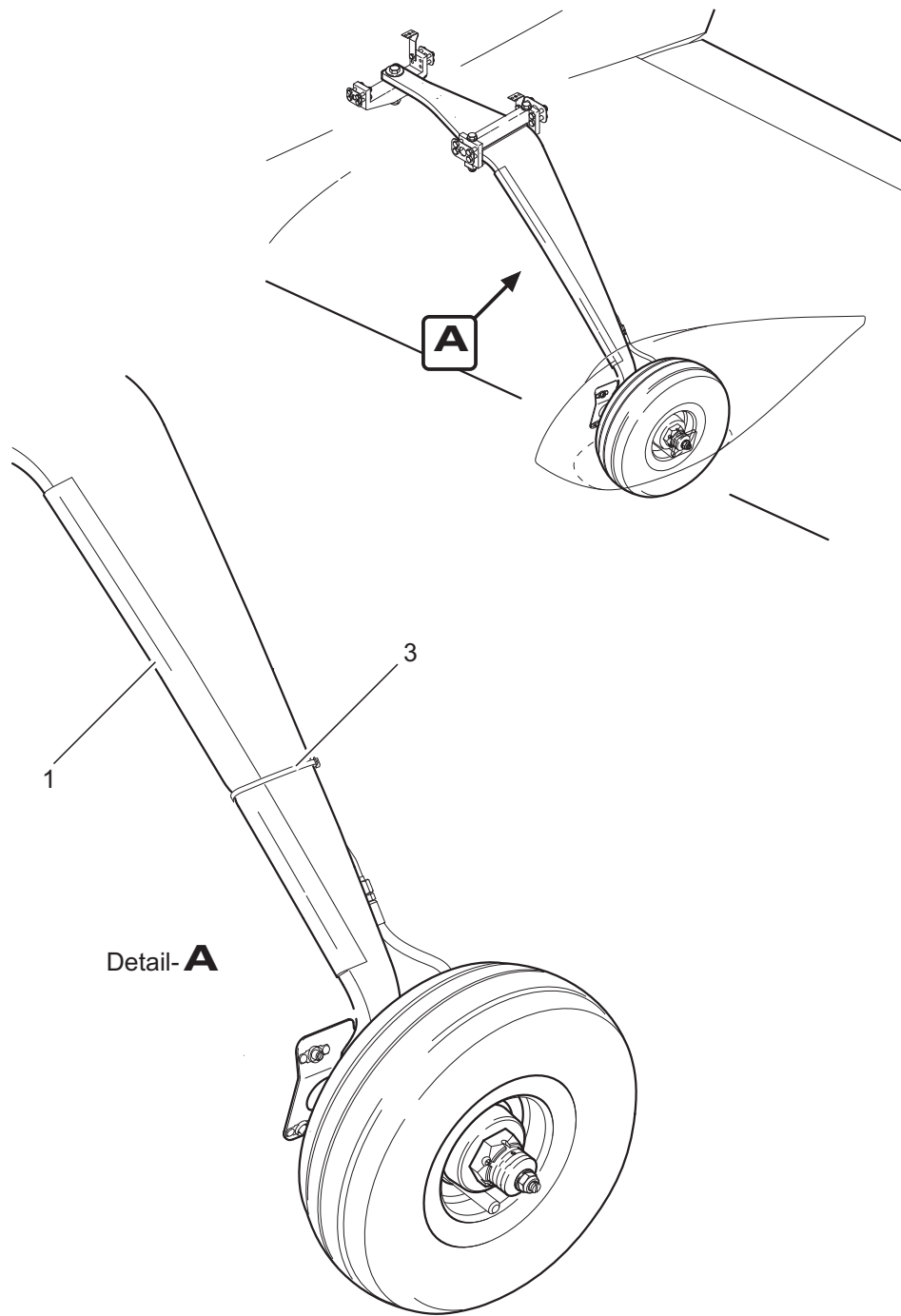
- Item not illustrated



Main Gear Wheel Installation
Figure 4

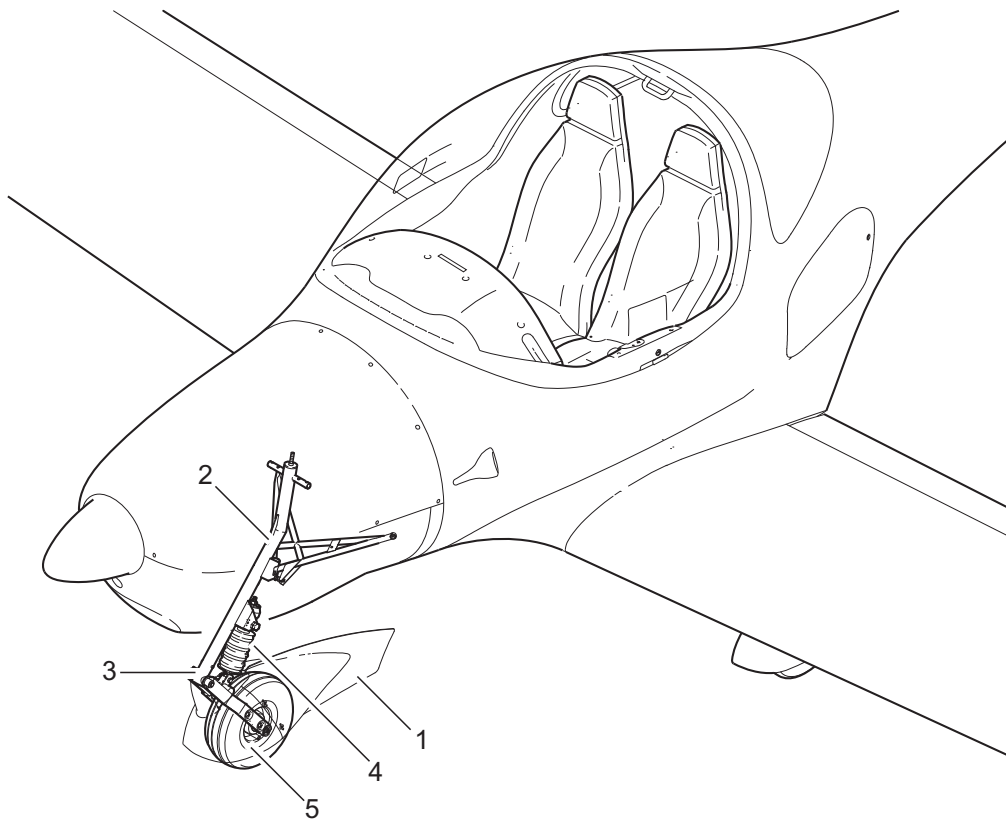
| Fig. Item | QTY | Part Number | Nomenclature | Effectivity |
|-----------|-----|---------------------|--|-------------|
| 4 | | | Main Gear Wheel Installation | |
| 1 | 4 | 1800985_M8_10 | locknut (ISO 10511 M8 class 10) | |
| 2 | 4 | 1800125_8,4 | washer (ISO 7089 d 8,4x16) | |
| - 3 | 1 | AT01-5030-004 | main gear fairing bracket RH | |
| 4 | 1 | AT01-5030-003 | main gear fairing bracket LH | |
| 5 | 1 | AT01-5010-100 | main landing gear axle | |
| - 6 | 1 | AT01-5020-352 | torque plate Cleveland RH | Cleveland |
| | | AT01-5020-359 | torque plate Grove RH | Grove |
| 7 | 1 | AT01-5020-351 | torque plate Cleveland LH | Cleveland |
| | | AT01-5020-358 | torque plate Grove LH | Grove |
| 8 | 8 | 1809037_08048 | bolt (LN 9037 M8x48) | |
| 9 | 2 | AT01-5020-202 | spacer bushing | |
| 10 | 1 | AT01-5040-001 | main wheel Cleveland (incl. rim, tire and brake disc) | Cleveland |
| | | AT01-5040-003 | main wheel Grove (incl. rim, tire and brake disc) | Grove |
| 11 | 1 | AT01-5020-201 | axle nut | |
| 12 | 1 | 1800094_3,2x63 | split pin (ISO 1234 3,2x63) | |
| 13 | AR | 1800988_8/0,05 | adjusting washer (as required) | |
| 14 | 1 | 1800094_2x40 | split pin (ISO 1234 2x40) | |
| 15 | 1 | AT01-5030-102 | bolt | |
| 16 | 3 | 18029679M6 | rivet nut (LN 29679 M6 / incl. in AT01-5030-003 & AT01-5030-004) | |
| 17 | 6 | 1807337_3,2x6 ES/ES | rivet (ISO 15984 3,2x6 A2/A2 / incl. in AT01-5030-003 & AT01-5030-004) | |

- Item not illustrated



| Fig. Item | QTY | Part Number | Nomenclature | Effectivity |
|-----------|-----|------------------|--|-------------|
| 5 | | | Main Gear Leg Protection | |
| | 1 | 1 AT01-5030-104 | leg protection | |
| | - 2 | AR AT01-1960-176 | construction glue | |
| | 3 | 1 AT01-4530-910 | tightening strap | |
| | - 4 | AR AT01-1440-178 | leg protection foil (self-adhesive / alternative to items 1-3) | |

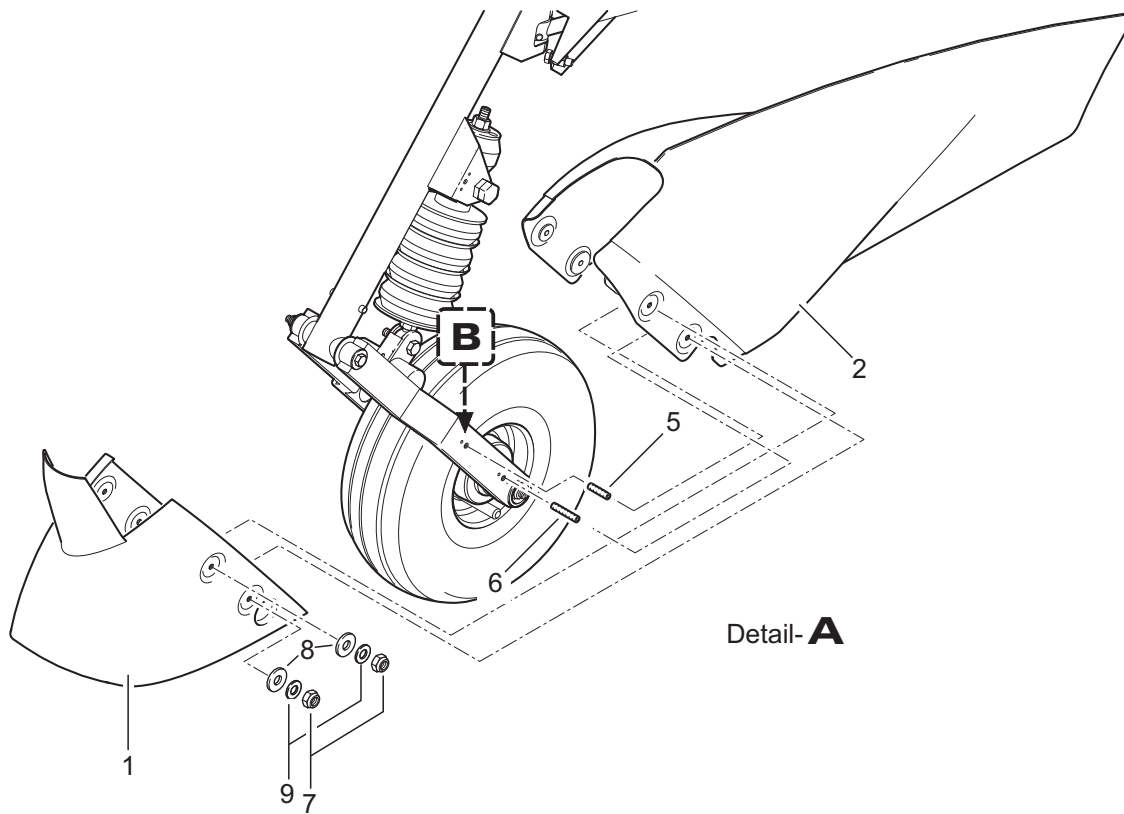
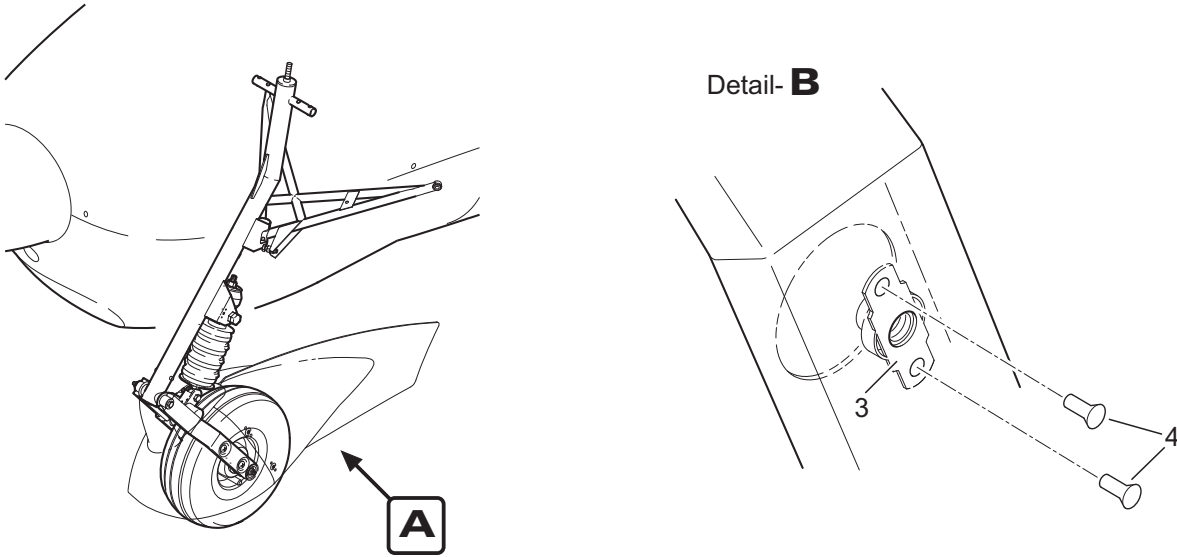
NOSE GEAR



Nose Gear - General
Figure 1

| Fig. Item | QTY | Part Number | Nomenclature | Effectivity |
|-----------|-----|-------------|---|--------------|
| 1 | | | Nose Gear - General | |
| | 1 | | Nose Gear Fairing Installation (refer to 32-20-00, figure 2A for details) | "High Speed" |
| | -1 | | Nose Gear Fairing Installation (refer to 32-20-00, figure 2B for details) | "Soft Field" |
| | 2 | | Nose Gear Strut Installation (refer to 32-20-00, figure 3 for details) | |
| | 3 | | Nose Gear Fork/Damper Installation (refer to 32-20-00, figure 4 for details) | |
| | 4 | | Damper Assembly (refer to 32-20-00, figure 5 for details) | |
| | 5 | | Nose Gear Wheel Installation (refer to 32-20-00, figure 6 for details) | |

- Item not illustrated



EFFECTIVITY

Aircraft equipped with nose gear fairing "High Speed"

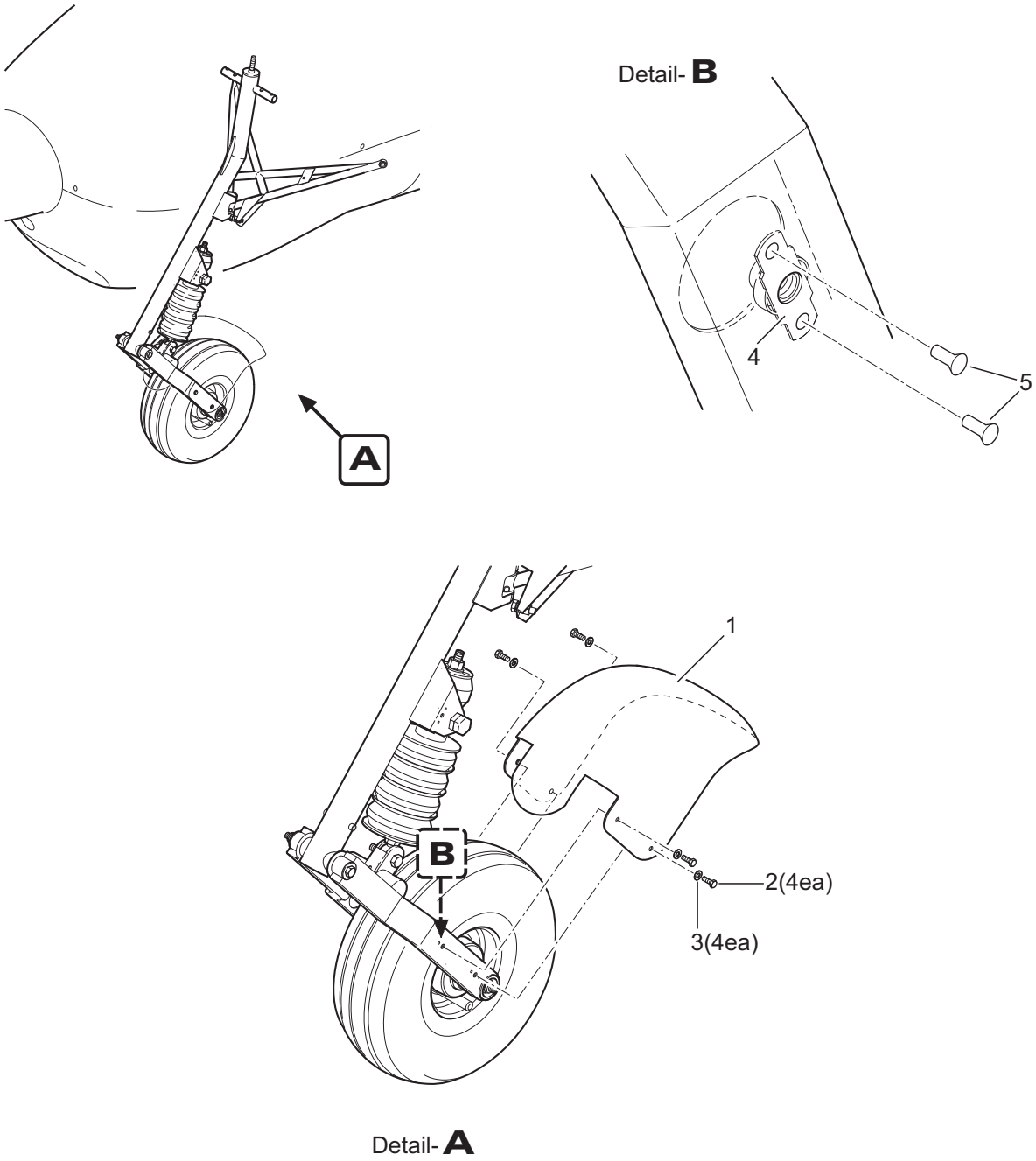
Nose Gear Fairing Installation
Figure 2A

| Fig. Item | QTY | Part Number | Nomenclature | Effectivity |
|--|-----|---------------------|---|---------------|
| 2A | | | Nose Gear Fairing Installation | "High Speed" |
| 1 | 1 | AT01-5160-007-070 | nose gear fairing "High Speed" forepart | 1) |
| | | AT01-5160-010-070 | nose gear fairing "High Speed" forepart (with cutout for reinforced nose wheel fork AT01-5110-005) | 2) |
| 2 | 1 | AT01-5160-008-070 | nose gear fairing "High Speed" rear part | 1) |
| 3 | 4 | 18029679M6 | rivet nut (LN 29679 M6) | |
| 4 | 8 | 1807337_3,2x6 ES/ES | rivet (ISO 15984 3,2x6 A2/A2) | |
| <u>Option A: Wheel fairing installation with steel washers</u> | | | | steel washers |
| 5 | 2 | 1800913_M06x25 | threaded pin (ISO 4026 M6x25) | |
| 6 | 2 | 1800913_M06x30 | threaded pin (ISO 4026 M6x30) | |
| 7 | 4 | 1800985_M6 | locknut (ISO 10511 M6) | |
| 8 | 4 | 1809021_6,4 | washer (ISO 7093 6,4x18) | |
| 9 | - | - | - | |
| <u>Option B: Wheel fairing installation with polyamide washers</u> | | | | PA washers |
| 5 | 2 | 1800913_M06x30 | threaded pin (ISO 4026 M6x30) | |
| 6 | 2 | 1800913_M06x35 | threaded pin (ISO 4026 M6x35) | |
| 7 | 4 | 1800985_M6 | locknut (ISO 10511 M6) | |
| 8 | 4 | 1809021_6,4_PA | washer (ISO 7093 6,4x18 polyamide) | |
| 9 | 4 | 1800125_6,4 | washer (ISO 7089 6,4x12) | |
| <u>Service Kits & Tools</u> | | | | |
| | | AT01-5160-009-096 | nose gear fairing "High Speed" (incl. AT01-5160-007 & AT01-5160-008 & mounting material) | 1) |

1) The old version of the nose gear fairing is no longer available and replaced by the parts shown on this page. Refer to SI-AT01-017, rev. A.02 or later, for more detailed information.

2) Refer to SB-AT01-037 for installation of the reinforced nose wheel fork.

- Item not illustrated



EFFECTIVITY

Aircraft equipped with nose gear fairing "Soft Field"

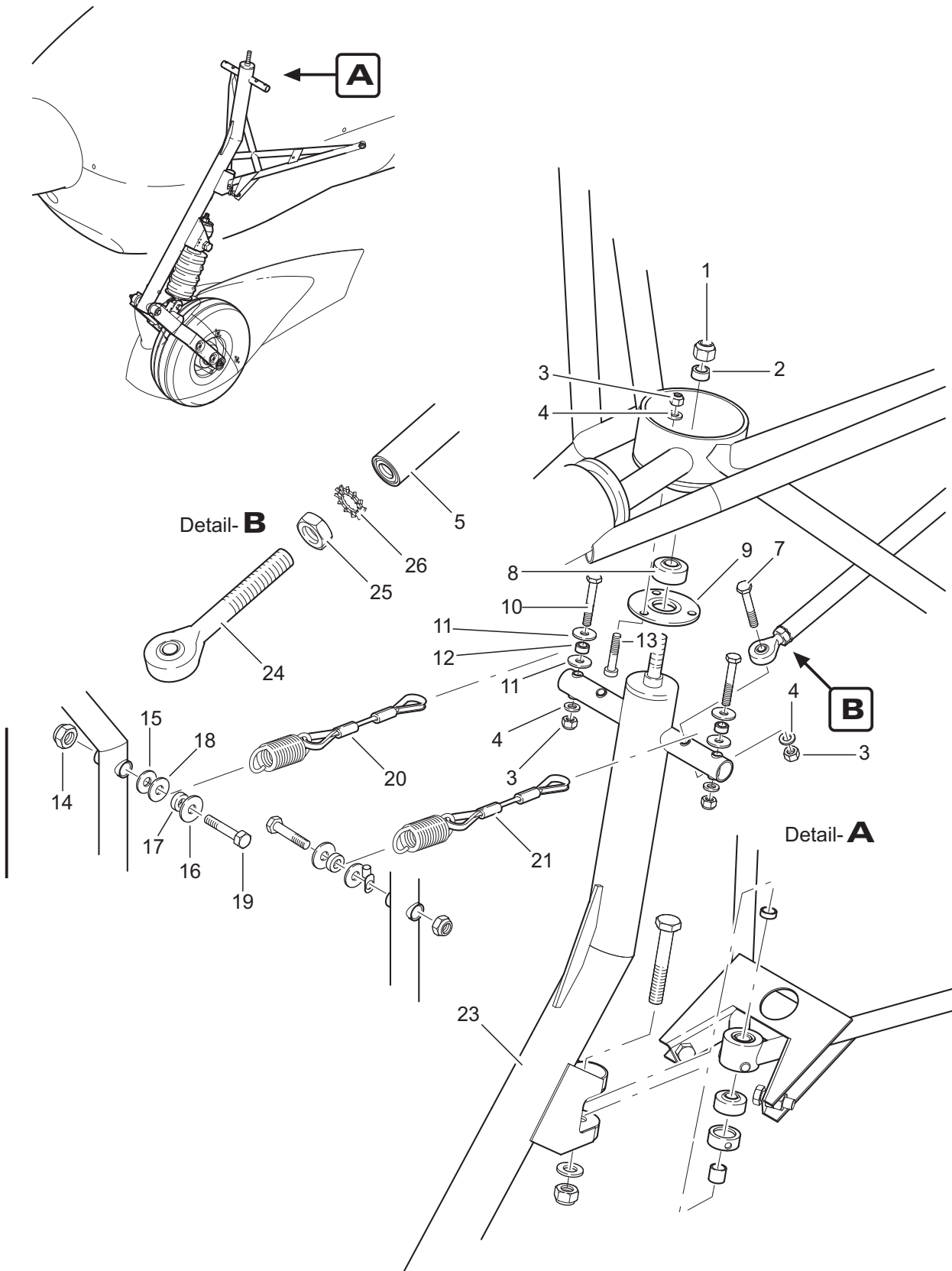
Nose Gear Fairing Installation
Figure 2B

| Fig. Item | QTY | Part Number | Nomenclature | Effectivity |
|-----------|-----|---------------------|------------------------------------|--------------|
| 2B | | | Nose Gear Fairing Installation | "Soft Field" |
| 1 | 1 | AT01-5160-006-070 | nose gear fairing "Soft Field" | |
| 2 | 4 | 1807380_6x20 ULF | bolt (ISO 7380 M6x20 ULF) | |
| 3 | 4 | 1809021_6,4_PA | washer (ISO 7093 6,4x18 polyamide) | |
| 4 | 4 | 18029679M6 | rivet nut (LN 29679 M6) | |
| 5 | 8 | 1807337_3,2x6 ES/ES | rivet (ISO 15984 3,2x6 A2/A2) | |

Service Kits & Tools

| | |
|-------------------|---|
| AT01-5160-006-096 | nose gear fairing "Soft Field" (incl. mounting material) |
|-------------------|---|

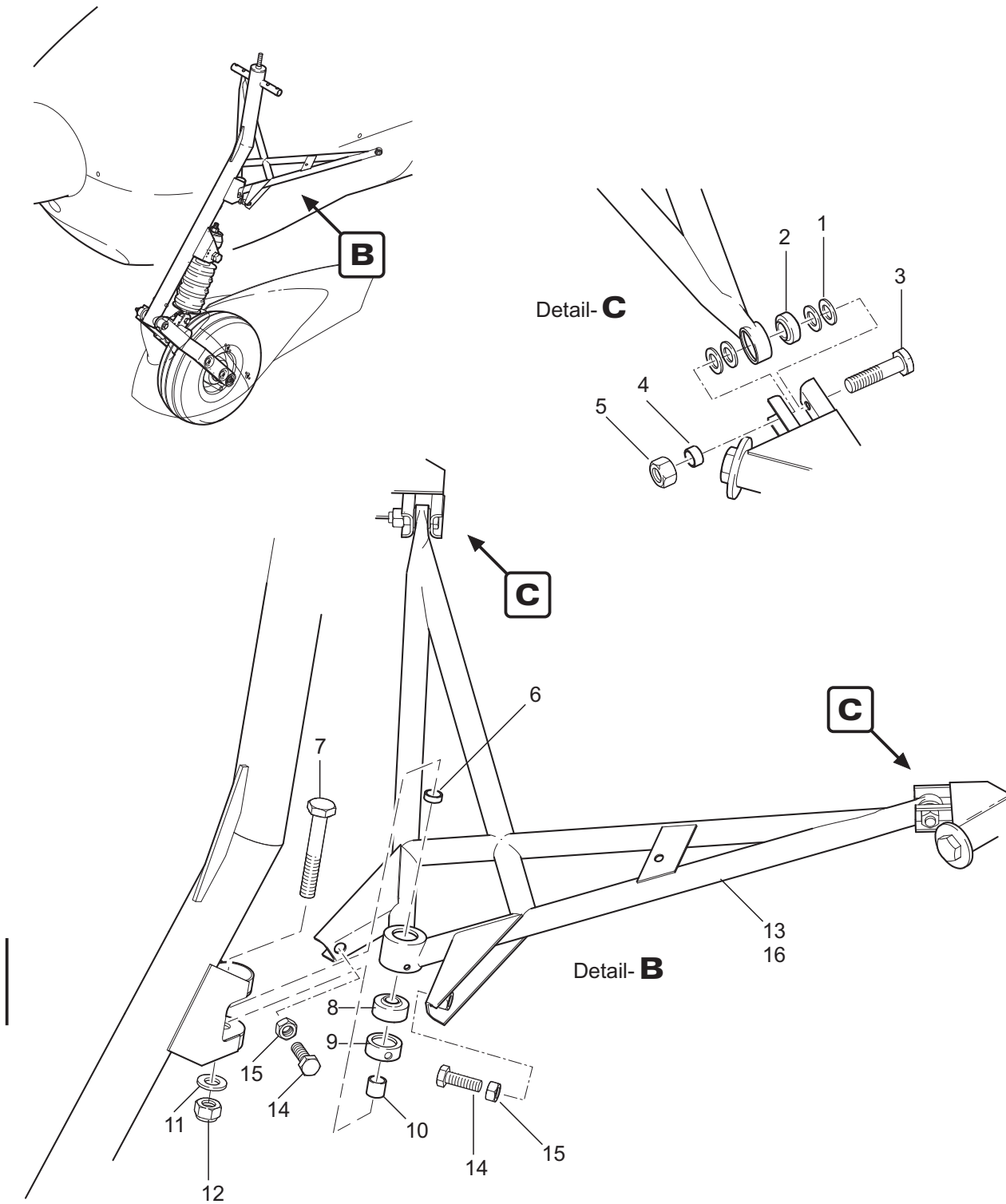
- Item not illustrated



Nose Gear Strut Installation
Figure 3 (1)

| Fig. Item | QTY | Part Number | Nomenclature | Effectivity |
|-----------|-----|---------------|---|-------------|
| 3 (1) | | | Nose Gear Strut Installation | |
| 1 | 1 | 1800985_M10 | locknut (ISO 10511 M10) | |
| 2 | 1 | AT01-5110-120 | spacer sleeve (upper bearing) | |
| 3 | 7 | 1800985_M6 | locknut (ISO 10511 M6) | |
| 4 | 7 | 1800125_6,4 | washer (ISO 7089 6,4x12) | |
| 5 | 1 | AT01-5120-002 | handlebar LH | |
| -6 | 1 | AT01-5120-004 | handlebar RH | |
| 7 | 2 | 1809037_06040 | bolt (LN 9037 M6x40) | |
| 8 | 1 | AT01-1850-103 | bearing | |
| 9 | 1 | AT01-5110-105 | bearing ring | |
| 10 | 2 | 1809037_06040 | bolt (LN 9037 M6x40) | |
| 11 | 4 | 1809021_6,4 | washer (ISO 7093 6,4x18) | |
| 12 | 2 | AT01-4510-125 | spacer sleeve | |
| 13 | 3 | 1806912_M6x30 | bolt (DIN 6912 M6x30 8.8) | |
| 14 | 2 | 1800985_M8 | locknut (ISO 10511 M8) | |
| 15 | 1 | 1800125_8,4 | washer (ISO 7089 8,4x16) | |
| 16 | 2 | 1809021_8,4 | washer (ISO 7093 8,4x24) | |
| 17 | 2 | AT01-5120-102 | spacer sleeve | |
| 18 | 2 | AT01-4540-147 | washer | |
| 19 | 2 | 1800931_M8x40 | bolt (ISO 4014 M8x40 8.8) | |
| 20 | 1 | AT01-5120-008 | centering cable RH (incl. centering spring) | |
| 21 | 1 | AT01-5120-007 | centering cable LH (incl. centering spring) | |
| 22 | - | - | - | |
| 23 | 1 | AT01-5110-001 | nose gear leg | |
| 24 | 2 | AT01-1850-120 | swivel head | |
| 25 | 2 | 1800936_M8 | nut (ISO 4035 M8) | |
| 26 | 2 | 1806797_8,4 | tooth washer (DIN 6797 8,4x15) | |

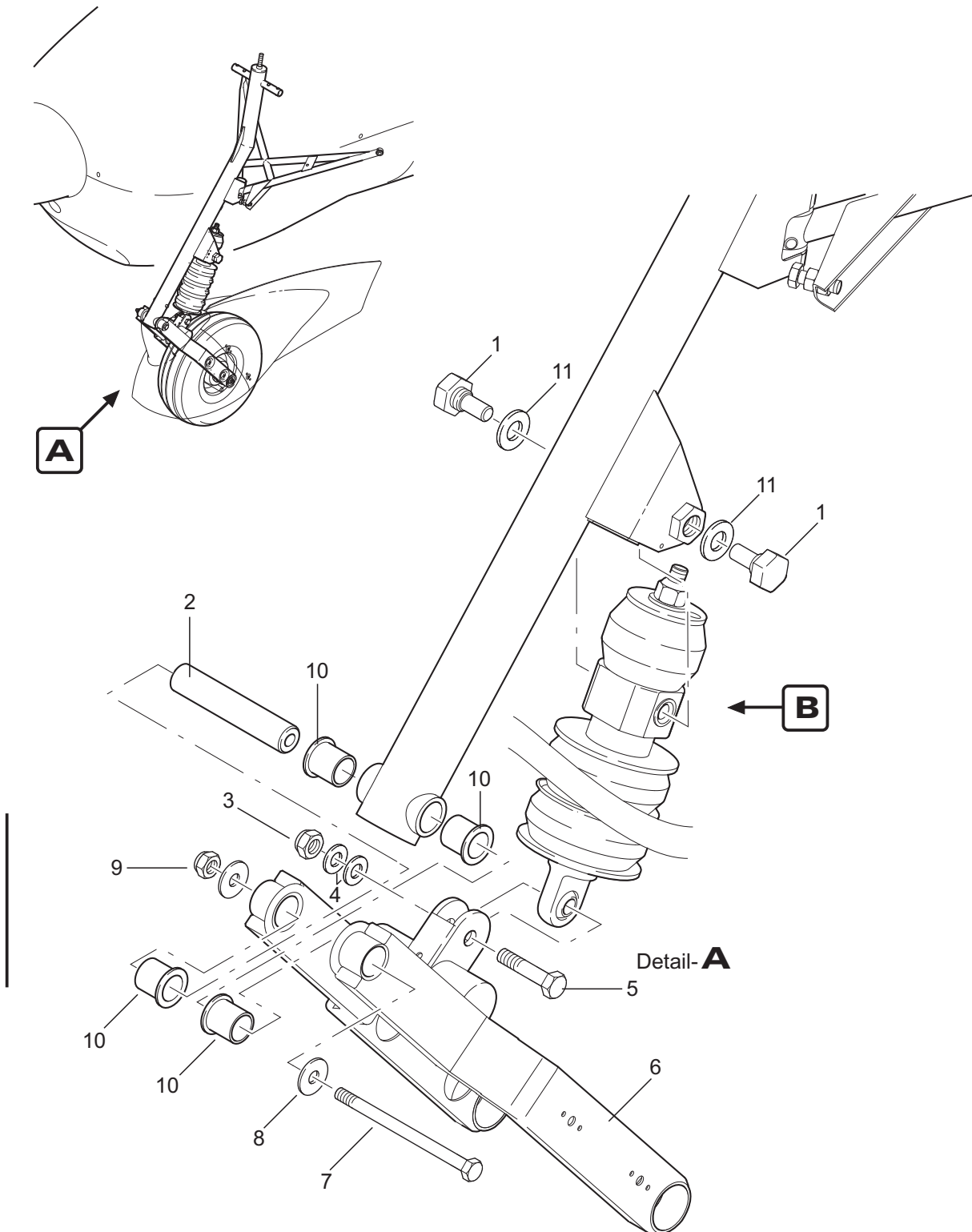
- Item not illustrated



Nose Gear Strut Installation
Figure 3 (2)

| Fig. Item | QTY | Part Number | Nomenclature | Effectivity |
|-----------|-----|---------------------|--|-------------|
| 3 (2) | | | Nose Gear Strut Installation | |
| 1 | 8 | 1800988_8/1 | adjusting washer (DIN 988 8x14x1) | |
| 2 | 2 | AT01-1850-104 | bearing | |
| 3 | 2 | 1809037_08032 | bolt (LN 9037 M8x32) | |
| 4 | 2 | AT01-4510-127 | spacer sleeve | |
| 5 | 2 | 1800985_M8 | locknut (ISO 10511 M8) | |
| 6 | 1 | AT01-5130-101 | upper bearing sleeve | |
| 7 | 1 | 1809037_10048 | bolt (LN 9037 M10x48) | |
| 8 | 1 | AT01-1850-103 | bearing | |
| 9 | 1 | AT01-5130-103 | bearing ring | |
| | 3 | 1807337_4,0x6 ES/ES | rivet (ISO 15984 A 4x6 A2/A2) | |
| 10 | 1 | AT01-5130-100 | lower bearing sleeve | |
| 11 | 1 | 1800125_10,5 | washer (ISO 7089 10,5x20) | |
| 12 | 1 | 1800985_M10 | locknut (ISO 10511 M10) | |
| 13 | 1 | AT01-5130-001 | nose gear leg support brace | |
| 14 | 2 | 1800933_M8x25 | bolt (ISO 4017 M8x25 8.8) | |
| 15 | 2 | 1800934_M8 | nut (ISO 4032 M8) | |
| 16 | 1 | AT01-5130-003 | nose gear leg support brace assembly (including items 1-5, 8, 9, 13-15) | |

- Item not illustrated

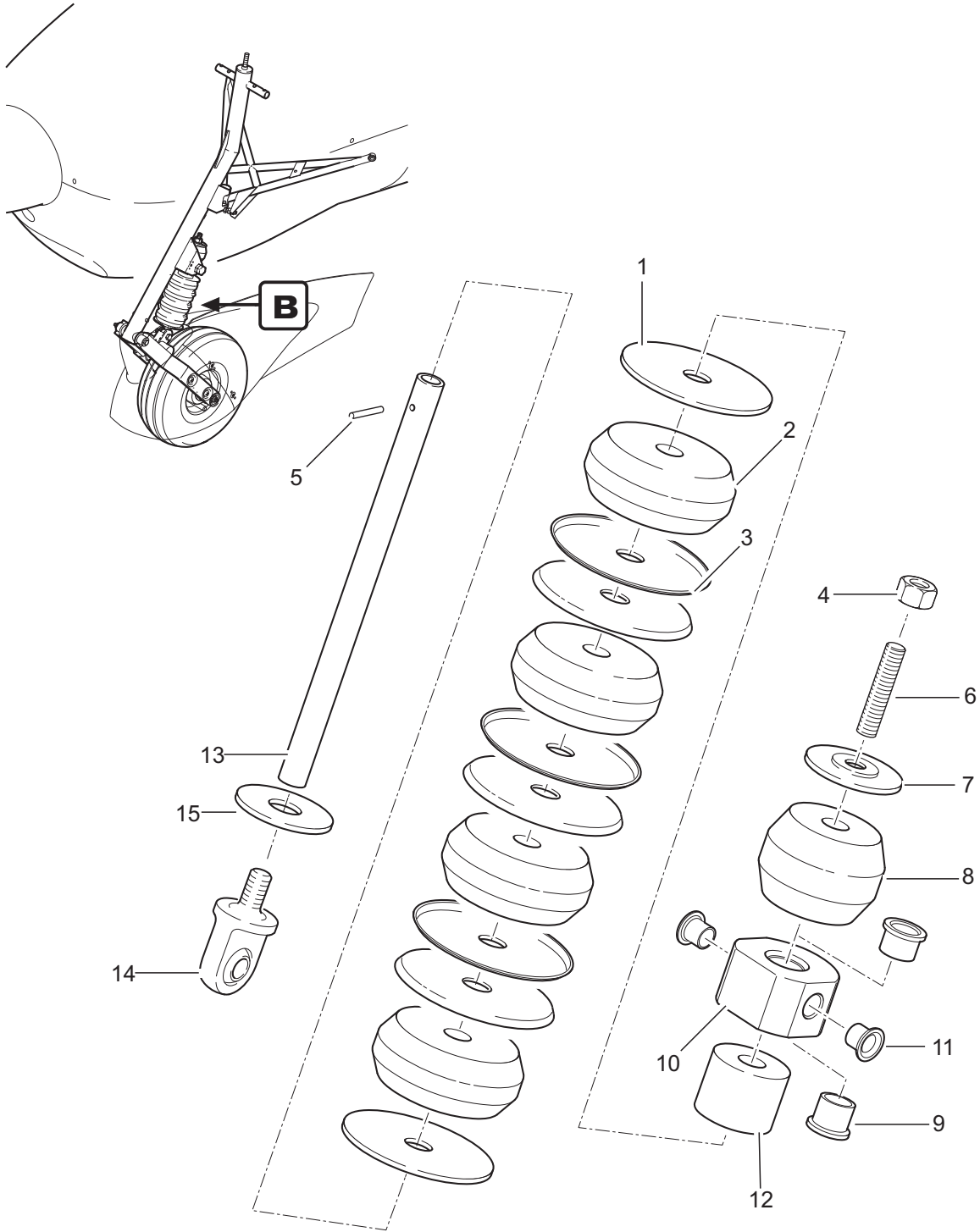


Nose Gear Fork / Damper Installation
Figure 4

| Fig. Item | QTY | Part Number | Nomenclature | Effectivity |
|-----------|-----|----------------|--------------------------------------|-------------|
| 4 | | | Nose Gear Fork / Damper Installation | |
| 1 | 2 | AT01-5110-111 | bolt | |
| 2 | 1 | AT01-5110-102 | nose gear bearing shaft | |
| 3 | 1 | 1800985_M10 | locknut (ISO 10511 M10) | |
| 4 | 2 | 1800125_10,5 | washer (ISO 7089 10,5x20) | |
| 5 | 1 | 1809037_10040 | bolt (LN 9037 M10x40) | |
| 6 | 1 | AT01-5110-002 | nose gear fork | |
| | | AT01-5110-005 | nose gear fork (reinforced) | 1) |
| 7 | 1 | 1800931_M8x110 | bolt (ISO 4014 M8x110 8.8) | |
| 8 | 2 | 1809021_8,4 | washer (ISO 7093 8,4x24) | |
| 9 | 1 | 1800985_M8 | locknut (ISO 10511 M8) | |
| 10 | 4 | 1850022 | collar bushing | |
| 11 | 2 | 1800125_15 | washer (ISO 7089 15x28) | |

1) Refer to SB-AT01-037 for installation of the reinforced nose wheel fork.

- Item not illustrated



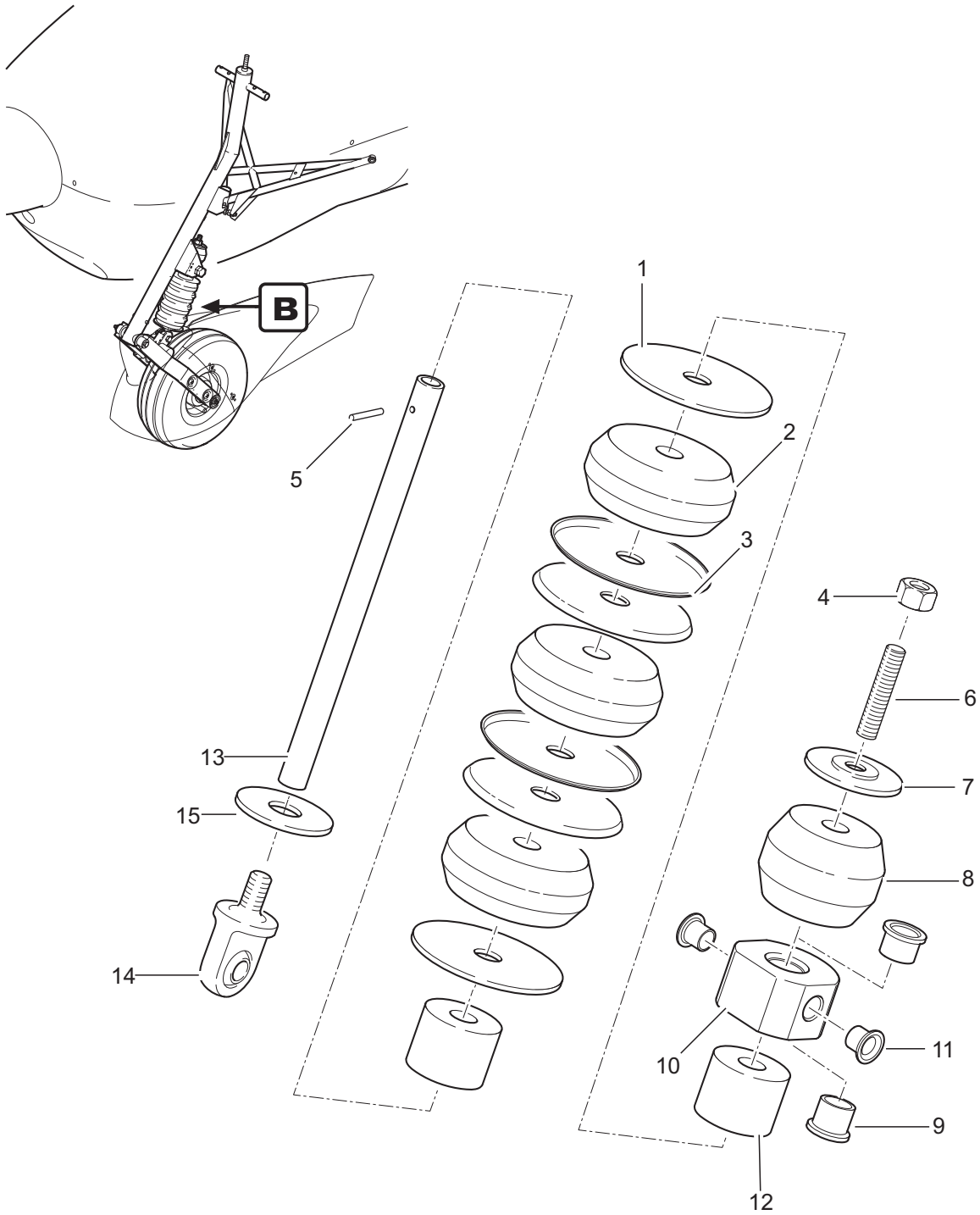
Detail- **B**

| Fig. Item | QTY | Part Number | Nomenclature | Effectivity |
|-----------|-----|------------------|-----------------------------|-------------|
| 5A | | | Damper Assembly | |
| 1 | 2 | AT01-5140-102 | damper plate | |
| 2 | 4 | AT01-5140-104 | main rubber element | |
| 3 | 6 | AT01-5140-103 | plate | |
| 4 | 1 | 1800985_M10 | locknut (ISO 10511 M10) | |
| 5 | 1 | 1801473 FST 3x12 | grooved pin (DIN 1473 3x12) | |
| 6 | 1 | AT01-5140-106 | threaded insert | |
| 7 | 1 | AT01-5140-113 | pressure disc | |
| 8 | 1 | AT01-5140-105 | rebound rubber element | |
| 9 | 2 | 1850033 | collar bushing | |
| 10 | 1 | AT01-5140-108 | glide element | |
| 11 | 2 | 1850013 | collar bushing | |
| 12 | 1 | AT01-5140-109 | spacer | |
| 13 | 1 | AT01-5140-101 | guide tube | |
| 14 | 1 | AT01-5140-005 | swivel head | |
| 15 | 1 | AT01-5140-112 | pressure disc | |

Service Kits & Tools

| | |
|-------------------|--|
| AT01-5140-001-096 | damper assembly (4 rubber elements / including items 1-15) |
|-------------------|--|

- Item not illustrated



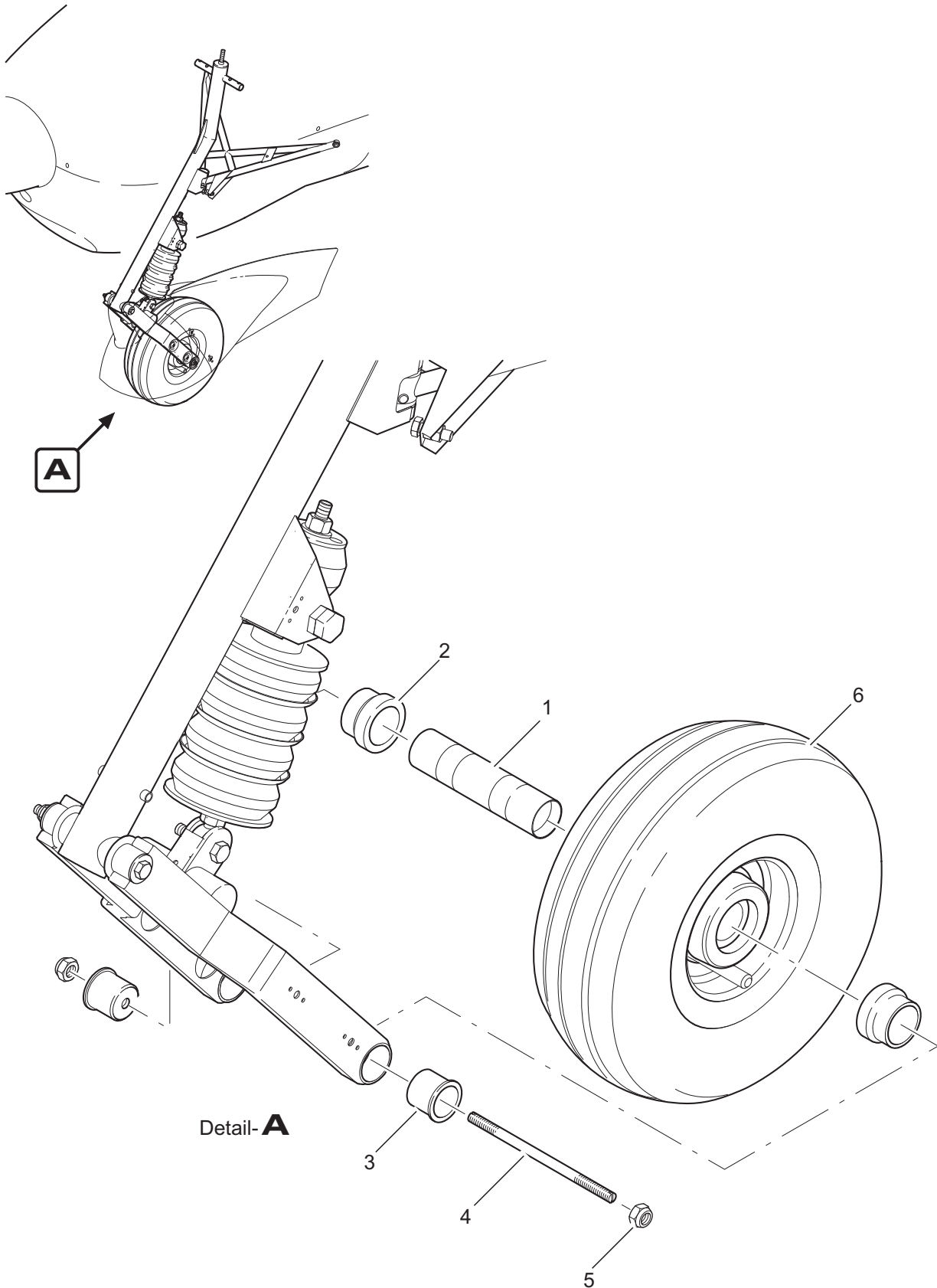
Detail- **B**

| Fig. Item | QTY | Part Number | Nomenclature | Effectivity |
|-----------|-----|------------------|-----------------------------|-------------|
| 5B | | | Damper Assembly | SB-AT01-037 |
| 1 | 2 | AT01-5140-114 | damper plate | |
| 2 | 3 | AT01-5140-104 | main rubber element | |
| 3 | 4 | AT01-5140-103 | plate | |
| 4 | 1 | 1800985_M10 | locknut (ISO 10511 M10) | |
| 5 | 1 | 1801473 FST 3x12 | grooved pin (DIN 1473 3x12) | |
| 6 | 1 | AT01-5140-106 | threaded insert | |
| 7 | 1 | AT01-5140-113 | pressure disc | |
| 8 | 1 | AT01-5140-105 | rebound rubber element | |
| 9 | 2 | 1850033 | collar bushing | |
| 10 | 1 | AT01-5140-108 | glide element | |
| 11 | 2 | 1850013 | collar bushing | |
| 12 | 2 | AT01-5140-109 | spacer | |
| 13 | 1 | AT01-5140-101 | guide tube | |
| 14 | 1 | AT01-5140-005 | swivel head | |
| 15 | 1 | AT01-5140-112 | pressure disc | |

Service Kits & Tools

AT01-5140-006 damper assembly (3 rubber elements / including items 1-15)

- Item not illustrated

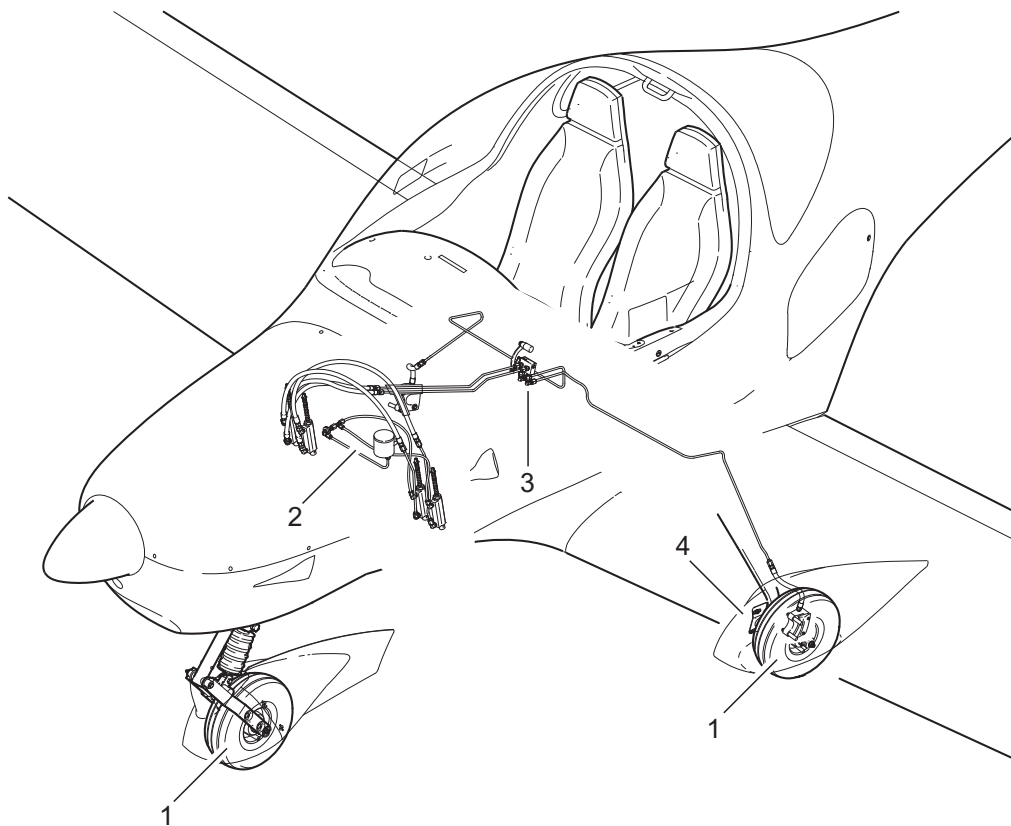


Nose Gear Wheel Installation
Figure 6

| Fig. Item | QTY | Part Number | Nomenclature | Effectivity |
|-----------|-----|----------------|---|-------------|
| 6 | | | Nose Gear Wheel Installation | |
| | 1 | AT01-5150-100 | nose landing gear axle | |
| | 2 | AT01-5150-102 | spacer sleeve | |
| | 2 | AT01-5150-101 | bearing race | |
| | | AT01-5150-131 | bearing race (optional) | |
| | 4 | AT01-5150-103 | axle bolt | |
| | 5 | 1800980_M08_10 | locknut (ISO 7042 M8 class 10) | |
| | 6 | AT01-5150-003 | nose wheel Cleveland (incl. rim and tire) | Cleveland |
| | | AT01-5150-004 | nose wheel Grove (incl. rim and tire) | Grove |

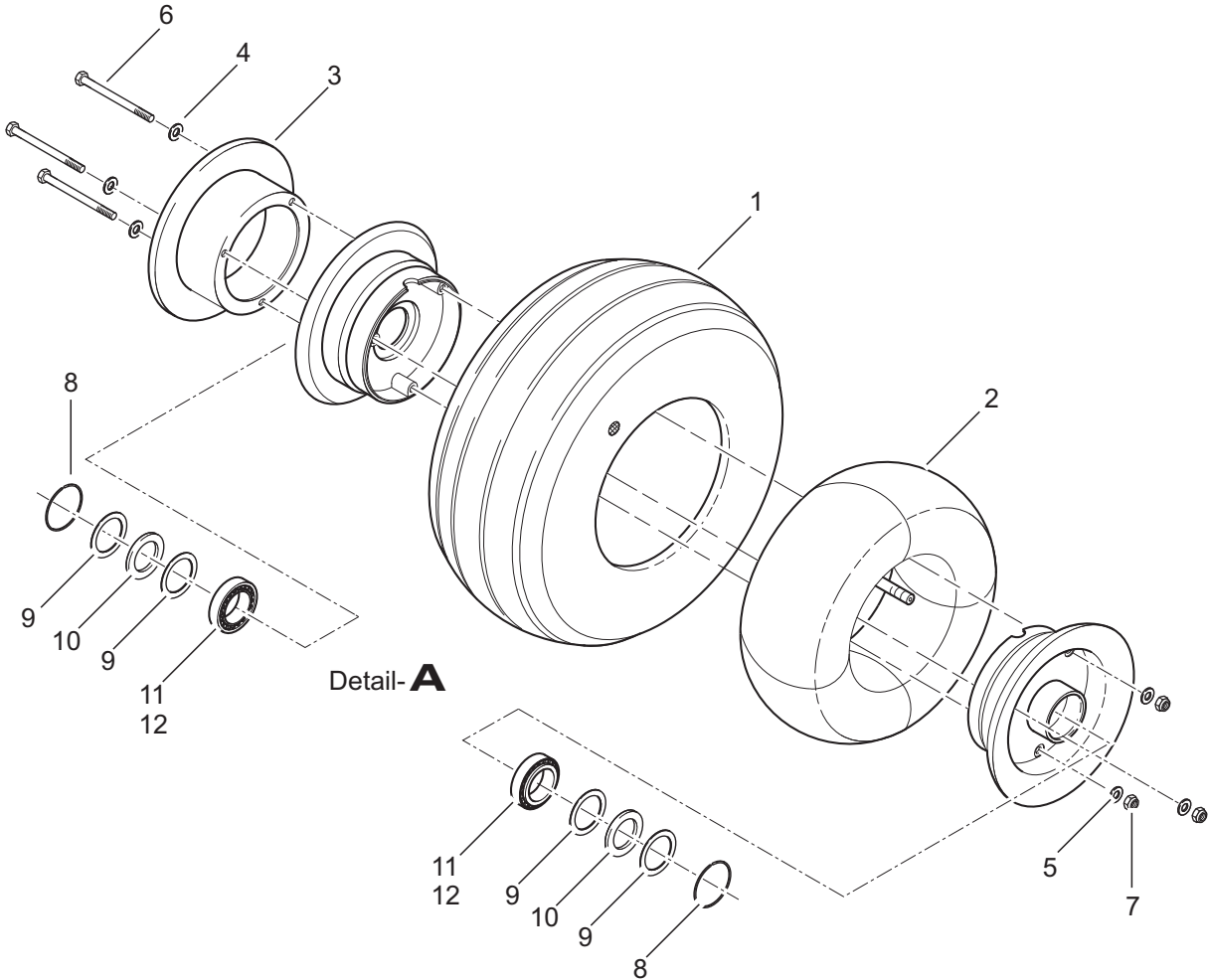
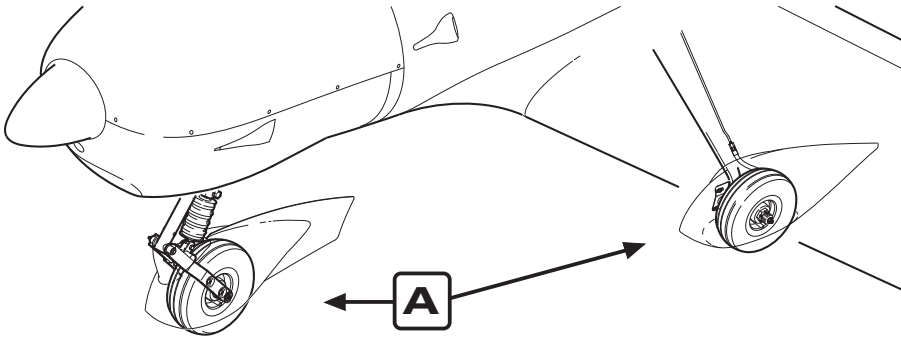
- Item not illustrated

WHEELS AND BRAKES



| Fig. Item | QTY | Part Number | Nomenclature | Effectivity |
|-----------|-----|-------------|--|-------------|
| 1 | | | Wheels & Brakes - General | |
| | 1 | | Wheel Assembly (refer to 32-40-00, figure 2 for details) | |
| | 2 | | Brake System Installation - Front (refer to 32-40-00, figure 3 for details) | |
| | 3 | | Brake System Installation - Rear (refer to 32-40-00, figure 4 for details) | |
| | 4 | | Brake Caliper Assembly (refer to 32-40-00, figure 5 for details) | |

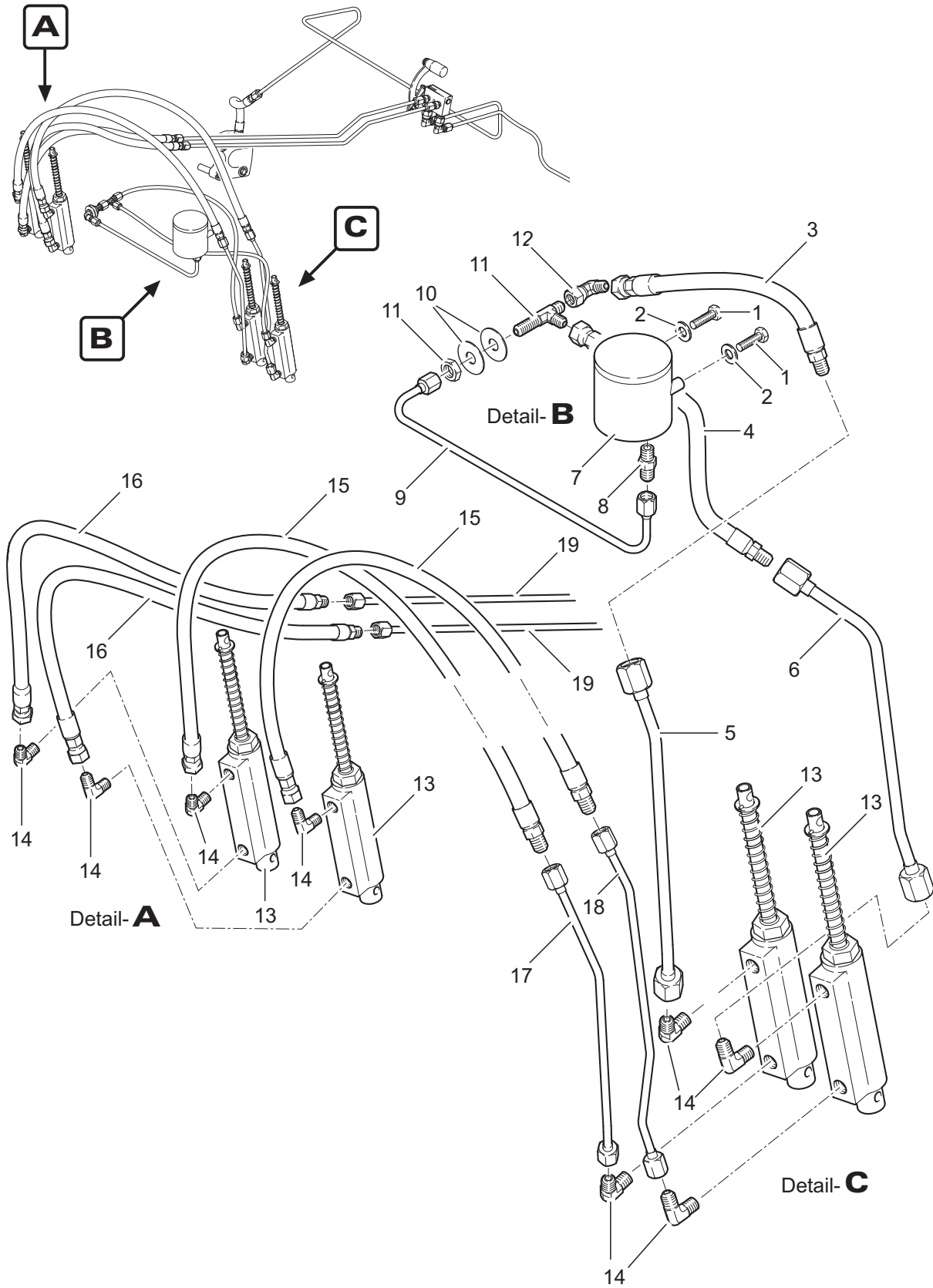
- Item not illustrated



Wheel Assembly
Figure 2

| Fig. Item | QTY | Part Number | Nomenclature | Effectivity |
|-----------|-----|---------------------------------|---|-------------|
| 2 | | | Wheel Assembly | |
| 1 | 1 | AT01-4590-102 | tire Michelin | Michelin |
| | | AT01-4590-103 | tire Goodyear | Goodyear |
| 2 | 1 | AT01-4590-112 | tube Michelin (use with Michelin tires only) | Michelin |
| | | AT01-4590-113 | tube Goodyear (use with Goodyear tires only) | Goodyear |
| | | <u>Cleveland wheels</u> | | Cleveland |
| 3 | 1 | AT01-5020-100 | brake disc | main wheel |
| 4 | 3 | AT01-5020-357 | washer (AN960-416L) | nose wheel |
| 5 | 3 | AT01-5020-357 | washer (AN960-416L) | |
| 6 | 3 | AT01-5020-355 | bolt (AN4-22A) | |
| 7 | 3 | AT01-5020-356 | nut (MS21042-4) | |
| 8 | 2 | 155-00200 | retaining ring | |
| 9 | 4 | 153-00800 | ring grease seal | |
| 10 | 2 | 154-00600 | felt grease seal | |
| 11 | 2 | 214-00300 | cup bearing | main wheel |
| | | AT01-5150-200 | cup bearing | nose wheel |
| 12 | 2 | 214-00400 | cone bearing | main wheel |
| | | AT01-5150-201 | cone bearing | nose wheel |
| | | <u>Grove wheels</u> | | Grove |
| 3 | 1 | AT01-5020-302 | brake disc | main wheel |
| 4 | 3 | AT01-5020-357 | washer (AN960-416L) | nose wheel |
| 5 | 3 | AT01-5020-366 | washer (AN960-416) | main wheel |
| | | AT01-5020-357 | washer (AN960-416L) | nose wheel |
| 6 | 3 | AT01-5020-365 | bolt (AN4-23A) | main wheel |
| | | AT01-5020-355 | bolt (AN4-22A) | nose wheel |
| 7 | 3 | AT01-5020-370 | nut (MS21044-N4) | |
| 8 | 2 | AT01-5020-362 | retaining ring | |
| 9 | 4 | AT01-5020-363 | ring grease seal | |
| 10 | 2 | AT01-5020-364 | felt grease seal | |
| 11 | 2 | AT01-5150-200 | cup bearing | |
| 12 | 2 | AT01-5150-201 | cone bearing | |
| | | <u>Service Kits & Tools</u> | | |
| | | AT01-5040-001 | main wheel Cleveland (incl. rim, brake disc, tire & tube) | Cleveland |
| | | AT01-5150-003 | nose wheel Cleveland (incl. rim, tire & tube) | Cleveland |
| | | AT01-5040-003 | main wheel Grove (incl. rim, brake disc, tire & tube) | Grove |
| | | AT01-5150-004 | nose wheel Grove (incl. rim, tire & tube) | Grove |

- Item not illustrated

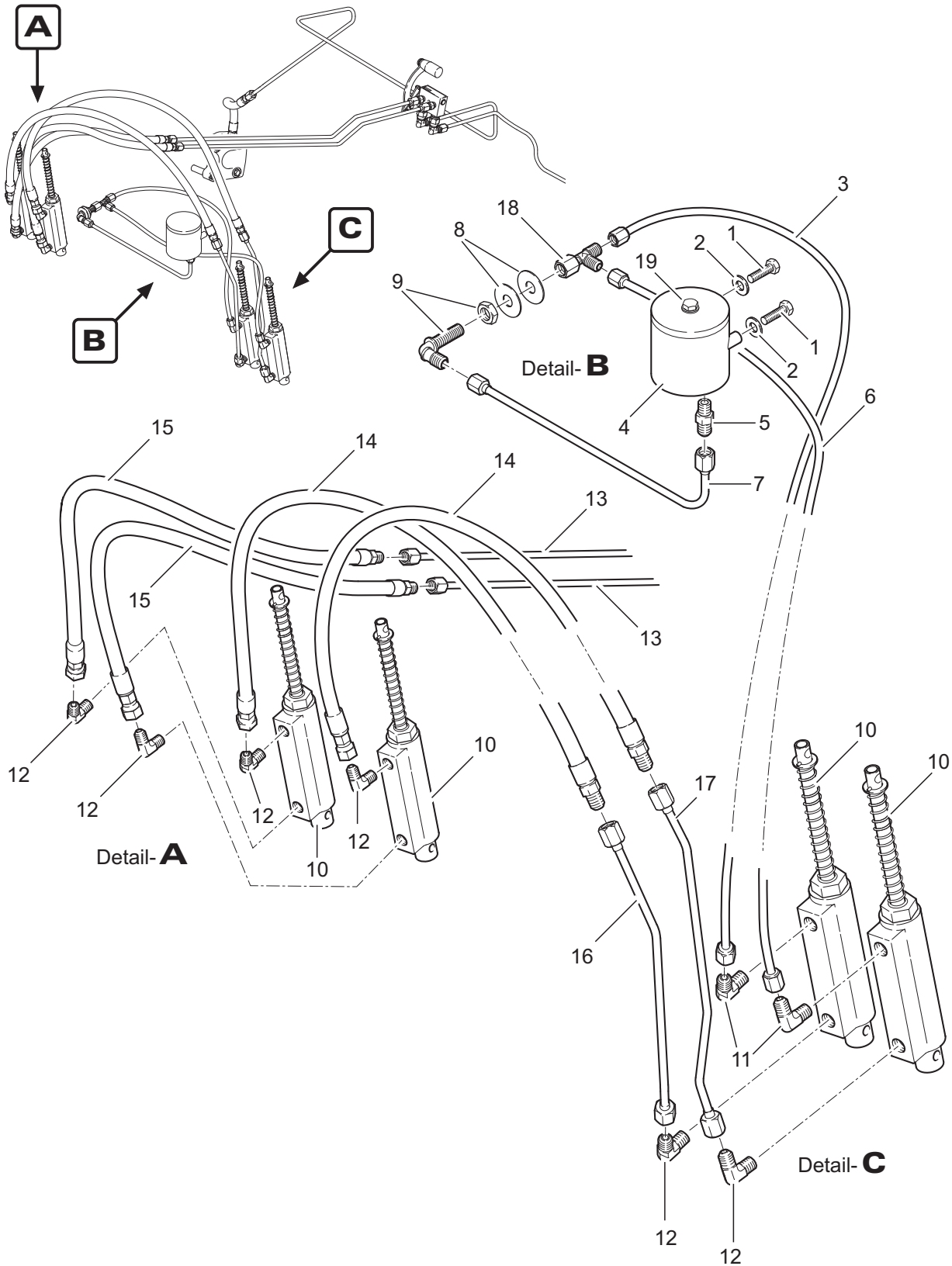


EFFECTIVITY
100 - 102

Brake System Installation - Front
Figure 3A

| Fig. Item | QTY | Part Number | Nomenclature | Effectivity |
|-----------|-----|-------------|-----------------------------------|---------------------------------|
| 3A | | | Brake System Installation - Front | 100 - 102 |
| | 1 | 2 | 1800933_M6x20 | bolt (ISO 4017 M6x20 8.8) |
| | 2 | 2 | 1809021_6,4 | washer (ISO 7093 6,4x18) |
| | 3 | 1 | AT01-5020-005 | brake hose RH |
| | 4 | 1 | AT01-5020-006 | brake hose LH |
| | 5 | 1 | AT01-5020-007 | brake pipe RH |
| | 6 | 1 | AT01-5020-008 | brake pipe LH |
| | 7 | 1 | AT01-5020-102 | brake fluid reservoir |
| | 8 | 1 | AT01-4520-235 | fitting |
| | 9 | 1 | AT01-5020-002 | brake pipe |
| | 10 | 2 | 1809022_12x35 | washer (DIN 9022 12x35) |
| | 11 | 1 | AT01-4520-225 | bulkhead T-fitting |
| | 12 | 1 | AT01-4520-160 | elbow |
| | 13 | 4 | AT01-6040-106 | master brake cylinder Cleveland |
| | 14 | 8 | AT01-4520-204 | elbow |
| | 15 | 2 | AT01-5020-012 | brake hose |
| | 16 | 2 | AT01-5020-013 | brake hose |
| | 17 | 1 | AT01-5020-011 | brake pipe RH |
| | 18 | 1 | AT01-5020-009 | brake pipe LH |
| | 19 | 2 | AT01-5020-015 | brake pipe |

- Item not illustrated



EFFECTIVITY

103 - 299

Brake System Installation - Front
Figure 3B

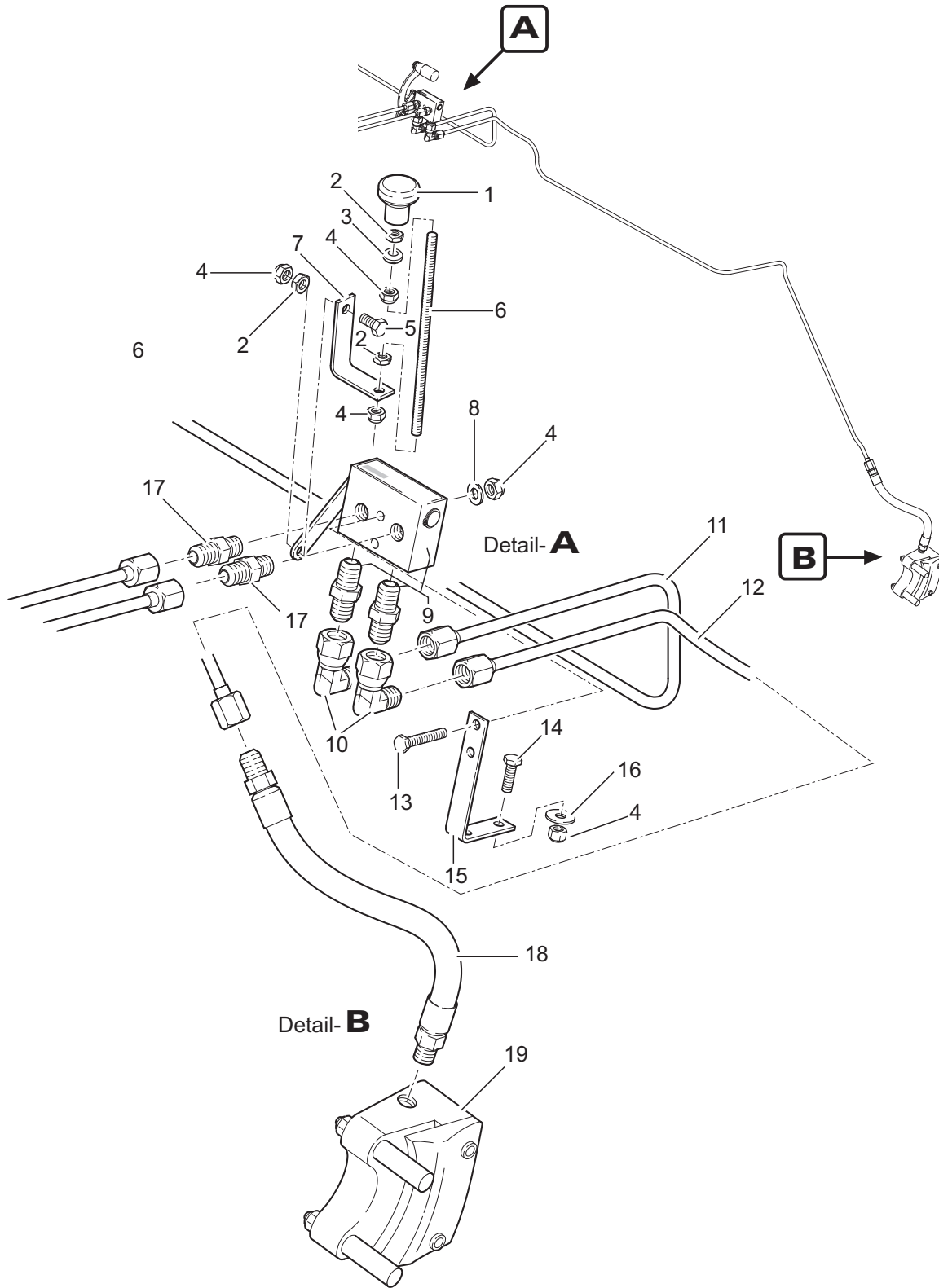
32-40-00

Page 6B

25.11.22

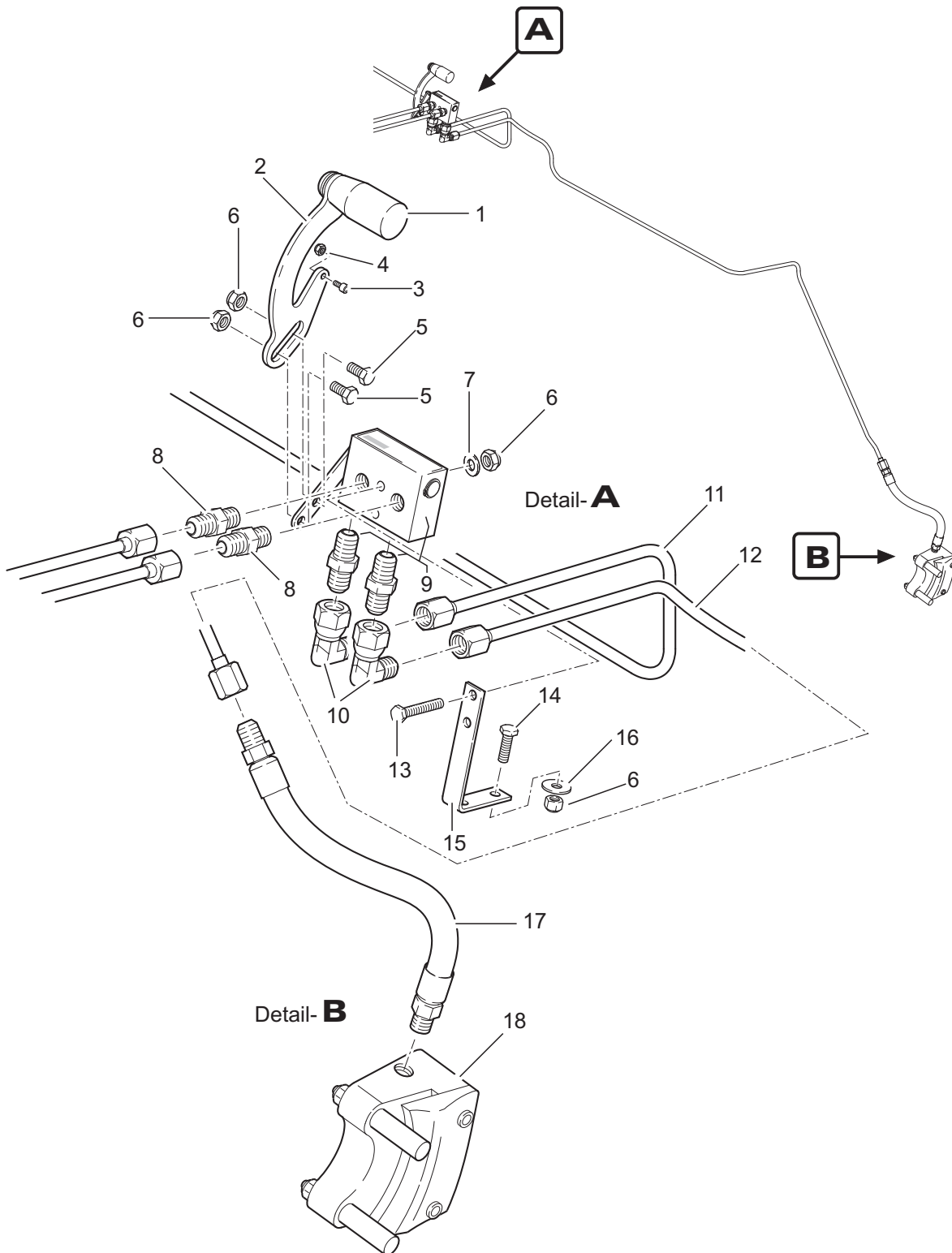
| Fig. Item | QTY | Part Number | Nomenclature | Effectivity | |
|-----------|-----|-------------|-----------------------------------|--|-----------|
| 3B | | | Brake System Installation - Front | 103 - 299 | |
| | 1 | 2 | 1800933_M6x20 | bolt (ISO 4017 M6x20 8.8) | |
| | 2 | 2 | 1809021_6,4 | washer (ISO 7093 6,4x18) | |
| | 3 | 1 | AT01-4520-420 | PTFE hose | |
| | 4 | 1 | AT01-5020-102 | brake fluid reservoir | |
| | 5 | 1 | AT01-4520-235 | fitting | |
| | 6 | 1 | AT01-4520-420 | PTFE hose | |
| | 7 | 1 | AT01-5020-002 | brake line | |
| | 8 | 2 | 1809022_12x35 | washer (DIN 9022 12x35) | |
| | 9 | 1 | AT01-4520-208 | bulkhead elbow | |
| | 10 | 4 | AT01-6040-106 | brake master cylinder Cleveland | 103 - 135 |
| - | 10 | 4 | AT01-6040-138 | brake master cylinder Matco (optional) | 136 - 299 |
| | 11 | 2 | AT01-4520-207 | elbow | |
| | 12 | 6 | AT01-4520-204 | elbow | |
| | 13 | 2 | AT01-5020-015 | brake line | |
| | 14 | 2 | AT01-5020-012 | brake hose | |
| | 15 | 2 | AT01-5020-013 | brake hose | |
| | 16 | 1 | AT01-5020-011 | brake line RH | |
| | 17 | 1 | AT01-5020-009 | brake line LH | |
| | 18 | 1 | AT01-4520-232 | T-fitting | |
| | 19 | 1 | AT01-5020-623 | sealing washer | |

- Item not illustrated



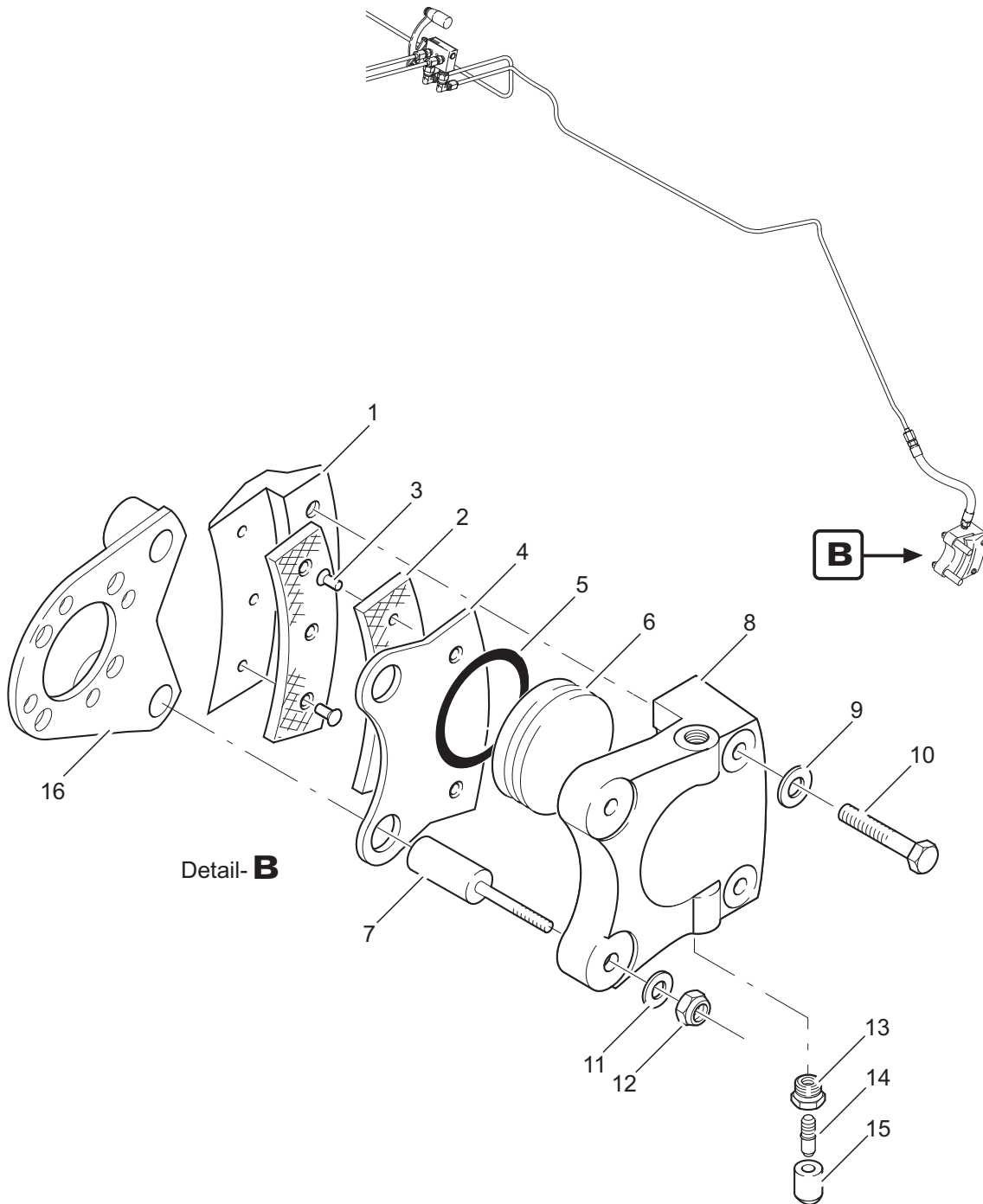
| Fig. Item | QTY | Part Number | Nomenclature | Effectivity |
|-----------|-----|--------------------|---|-------------|
| 4A | | | Brake System Installation - Rear | 101 - 122 |
| 1 | 1 | AT01-1860-611 | knob | |
| 2 | 3 | 1800439_M5 | nut (ISO 4035 M5) | |
| 3 | 1 | AT01-4530-230 | cable bushing | |
| 4 | 7 | 1800985_M5 | locknut (ISO 10511 M5) | |
| 5 | 1 | 1800933_M5x14 | bolt (ISO 4017 M5x14 8.8) | |
| 6 | 1 | AT01-5020-105 | pull rod | |
| 7 | 1 | AT01-5020-106 A.01 | fixing bracket | 100 - 103 |
| | 1 | AT01-5020-106 A.02 | fixing bracket | 104 - 122 |
| 8 | 2 | 1800125_5,3 | washer (ISO 7089 5,3x10) | |
| 9 | 1 | AT01-5020-020 | parking brake valve (incl. items 10 & 17) | |
| 10 | 2 | AT01-4520-160 | elbow | |
| 11 | 1 | AT01-5020-017 | brake pipe RH | |
| 12 | 1 | AT01-5020-016 | brake pipe LH | |
| 13 | 2 | 1800933_M5x30 | bolt (ISO 4017 M5x30 8.8) | |
| 14 | 2 | 1800933_M5x16 | bolt (ISO 4017 M5x16 8.8) | |
| 15 | 1 | AT01-5020-103 | fixing bracket | |
| 16 | 2 | 1809021_5,3 | washer (ISO 7093 5,3x15) | |
| 17 | 2 | AT01-4520-235 | fitting | |
| 18 | 2 | AT01-5020-022 | brake hose | |
| 19 | 2 | AT01-5020-004 | brake caliper Cleveland | |

- Item not illustrated



| Fig. Item | QTY | Part Number | Nomenclature | Effectivity |
|-----------|-----|---------------|----------------------------------|-------------|
| 4B | | | Brake System Installation - Rear | 123 - 299 |
| 1 | 1 | AT01-1860-612 | knob | |
| 2 | 1 | AT01-5020-106 | lever | |
| 3 | 1 | AT01-1860-111 | plunger M4x9 | |
| 4 | 1 | 1800985_M4 | locknut (ISO 10511 M4) | |
| 5 | 2 | 1800933_M5x12 | bolt (ISO 4017 M5x12 8.8) | |
| 6 | 6 | 1800985_M5 | locknut (ISO 10511 M5) | |
| 7 | 2 | 1800125_5,3 | washer (ISO 7089 5,3x10) | |
| 8 | 2 | AT01-4520-235 | fitting | |
| 9 | 1 | AT01-5020-153 | parking brake valve | |
| 10 | 2 | AT01-4520-160 | elbow | |
| 11 | 1 | AT01-5020-017 | brake line RH | |
| 12 | 1 | AT01-5020-016 | brake line LH | |
| 13 | 2 | 1800933_M5x30 | bolt (ISO 4017 M5x30 8.8) | |
| 14 | 2 | 1800933_M5x16 | bolt (ISO 4017 M5x16 8.8) | |
| 15 | 1 | AT01-5020-103 | fixing bracket | |
| 16 | 2 | 1809021_5,3 | washer (ISO 7093 5,3x15) | |
| 17 | 2 | AT01-5020-022 | brake hose | |
| 18 | 2 | AT01-5020-004 | brake caliper Cleveland | 123 - 211 |
| | 2 | AT01-5020-340 | brake caliper Grove | 212 - 299 |

- Item not illustrated



| Fig. Item | QTY | Part Number | Nomenclature | Effectivity |
|-----------|-----|---------------------------|-------------------------|-------------|
| 5 | | | Brake Caliper Assembly | |
| | | <u>Cleveland Calipers</u> | | Cleveland |
| 1 | 1 | AT01-5020-611 | back plate | |
| 2 | 2 | AT01-5020-353 | lining | |
| 3 | 6 | AT01-5020-354 | rivet | |
| 4 | 1 | AT01-5020-610 | pressure plate | |
| 5 | 1 | AT01-5020-600 | O-ring | |
| 6 | 1 | AT01-5020-612 | piston | |
| 7 | 2 | AT01-5020-601 | anchor bolt | |
| 8 | 1 | AT01-5020-603 | cylinder | |
| 9 | 2 | AT01-5020-604 | washer | |
| 10 | 2 | AT01-5020-355 | bolt (AN4H15A) | |
| 11 | 2 | AT01-5020-605 | washer | |
| 12 | 2 | AT01-5020-356 | nut anchor (MS21044-N4) | |
| 13 | 1 | AT01-5020-607 | seat (bleeder) | |
| 14 | 1 | AT01-5020-608 | screw (bleeder) | |
| 15 | 1 | AT01-5020-609 | cap (bleeder) | |
| 16 | 1 | AT01-5020-351 | torque plate LH | |
| - 17 | 1 | AT01-5020-352 | torque plate RH | |
| | | <u>Grove Calipers</u> | | Grove |
| 1 | 1 | AT01-5020-618 | back plate | |
| 2 | 2 | AT01-5020-360 | lining | |
| 3 | 6 | AT01-5020-361 | rivet | |
| 4 | 1 | AT01-5020-619 | pressure plate | |
| 5 | 1 | AT01-5020-622 | O-ring | |
| 6 | 1 | AT01-5020-617 | piston | |
| 7 | 2 | AT01-5020-620 | torque pin | |
| 8 | 1 | AT01-5020-621 | cylinder | |
| 9 | 2 | AT01-5020-366 | washer | |
| 10 | 2 | AT01-5020-367 | bolt (AN4H15A) | |
| 11 | 2 | AT01-5020-368 | washer | |
| 12 | 2 | AT01-5020-369 | nut anchor (MS21044-N4) | |
| 13 | 1 | AT01-5020-615 | seat (bleeder) | |
| 14 | 1 | AT01-5020-615 | screw (bleeder) | |
| 15 | 1 | AT01-5020-616 | cap (bleeder) | |
| 16 | 1 | AT01-5020-358 | torque plate LH | |
| - 17 | 1 | AT01-5020-359 | torque plate RH | |

- Item not illustrated

